

# Poultry Outlook

---

**Southern Extension Outlook Conference  
Atlanta, GA**

**September 28, 2016**

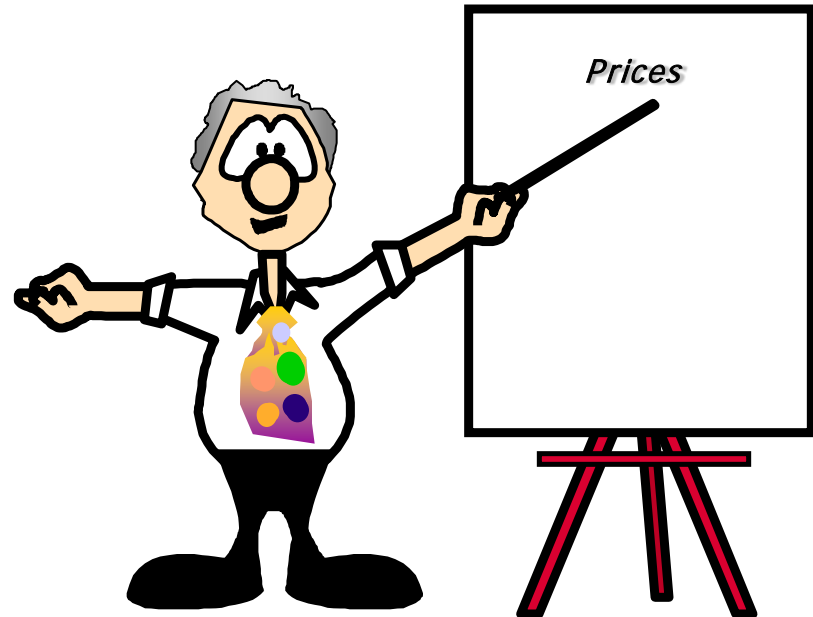
**David P. Anderson  
Professor and Extension Economist**

**TEXAS A&M  
AGRI LIFE  
EXTENSION**

# Overview

---

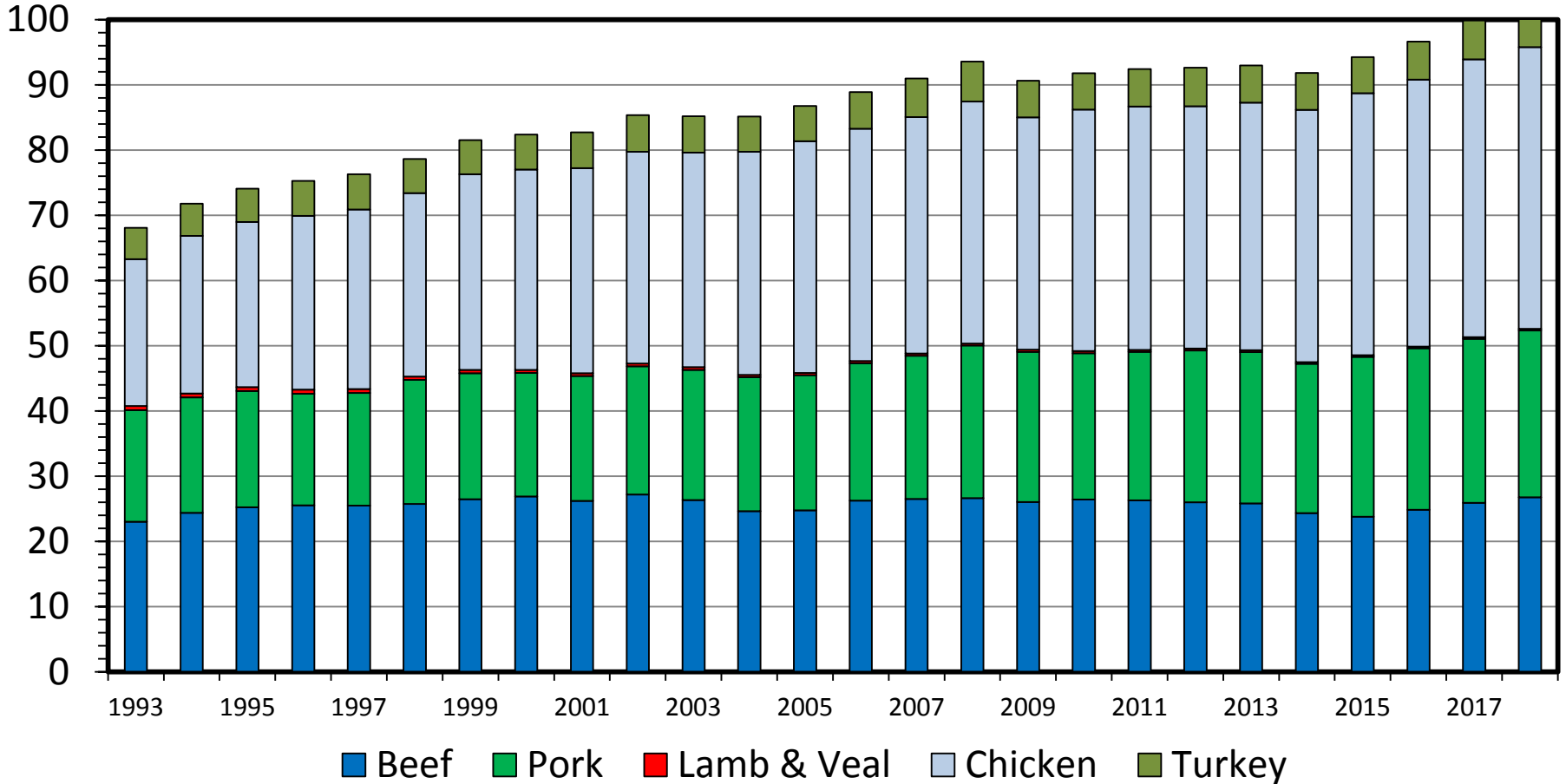
- Production
- Trade
- Prices



# COMMERCIAL MEAT & POULTRY PRODUCTION

## By Type of Meat, Annual

Bil. Pounds

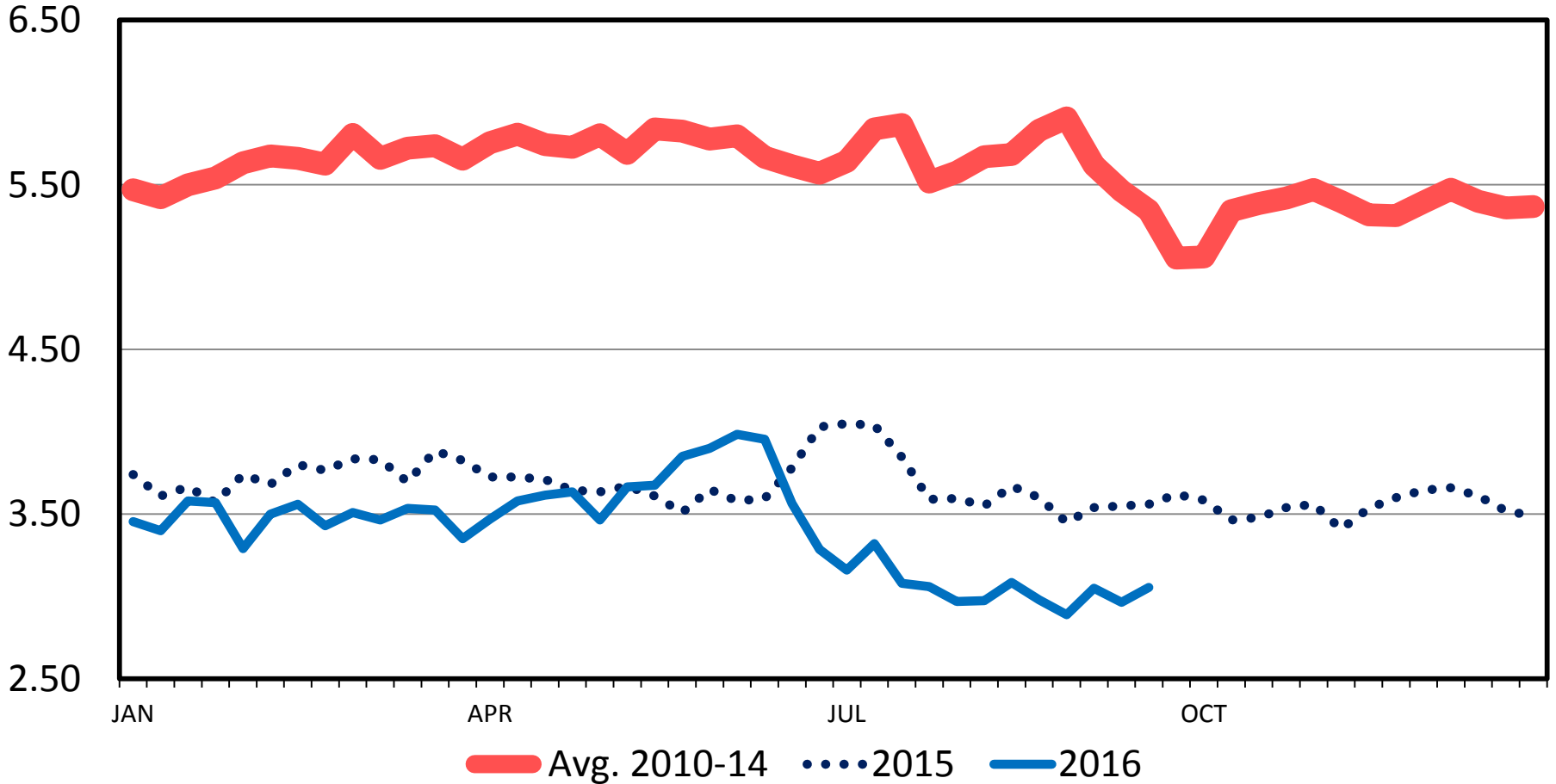


Data Source: USDA-NASS, Compiled & Analysis by LMIC  
 Livestock Marketing Information Center

# OMAHA CORN PRICES

Weekly

\$ Per Bu.

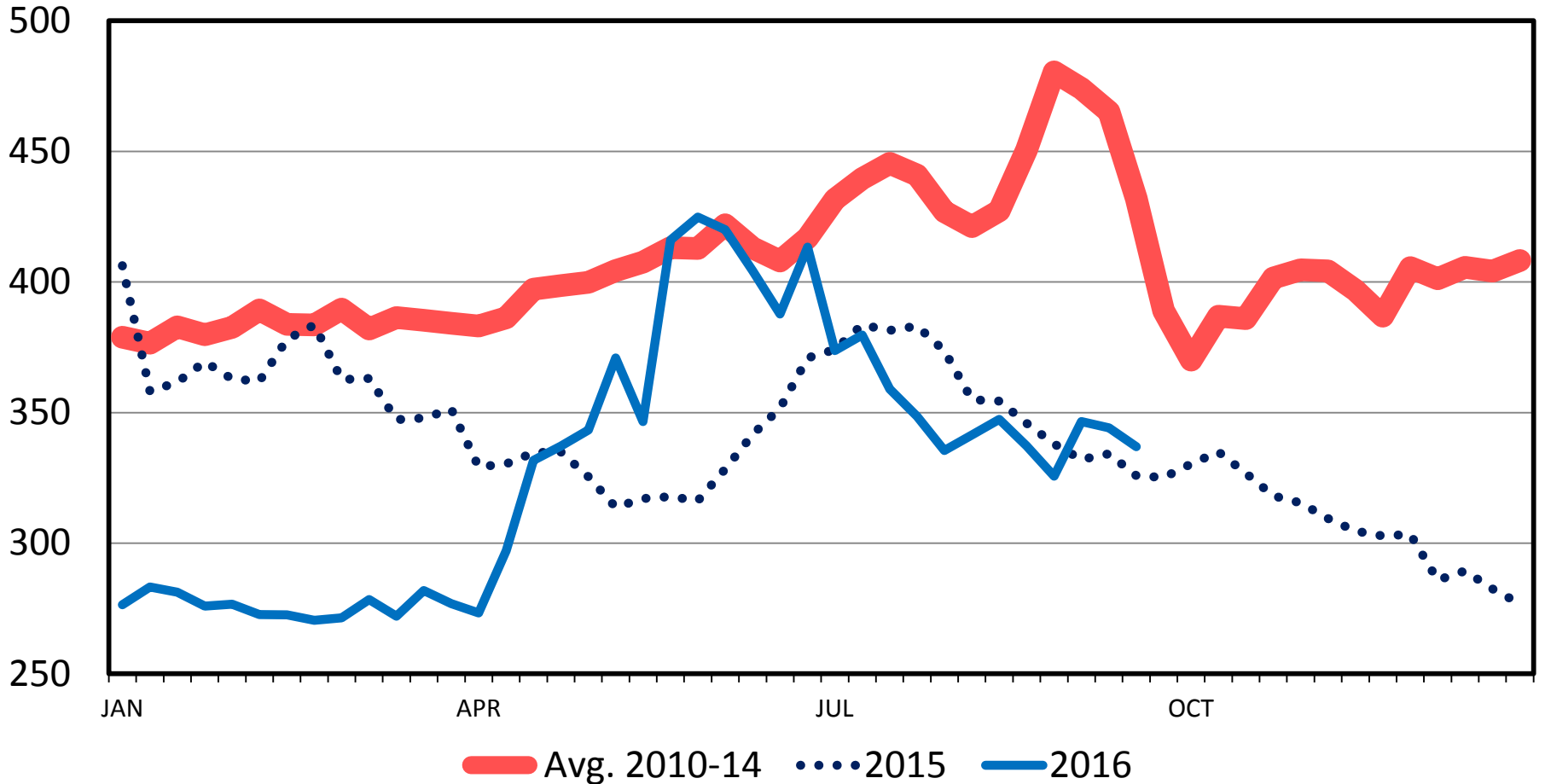


Data Source: USDA-AMS  
Livestock Marketing Information Center

# CENTRAL ILLINOIS SOYBEAN MEAL (48%) PRICES

Weekly

\$ Per Ton



Data Source: USDA-AMS  
Livestock Marketing Information Center

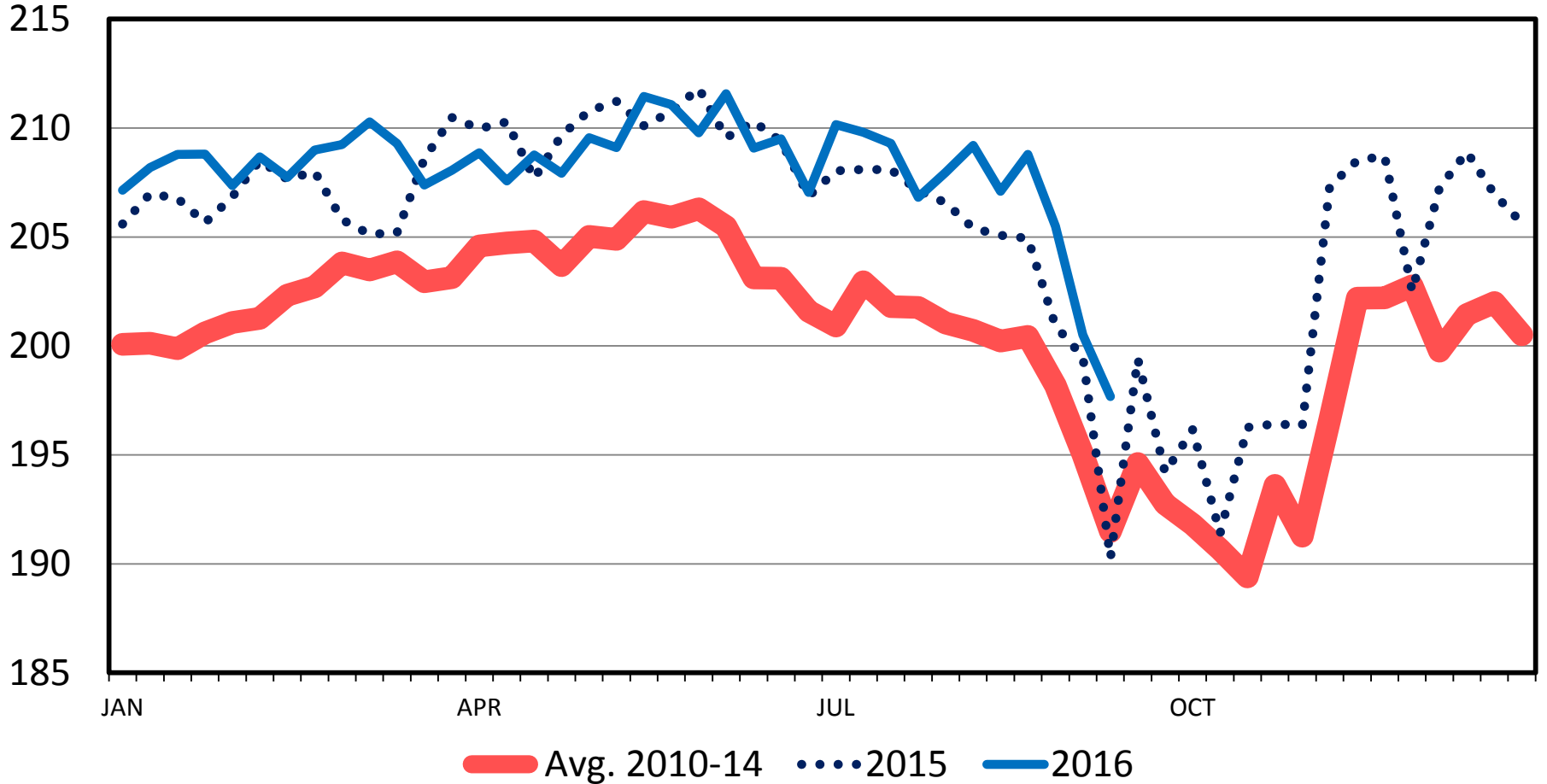
# Production

---

# BROILER EGGS SET

Weekly

Mil. Eggs

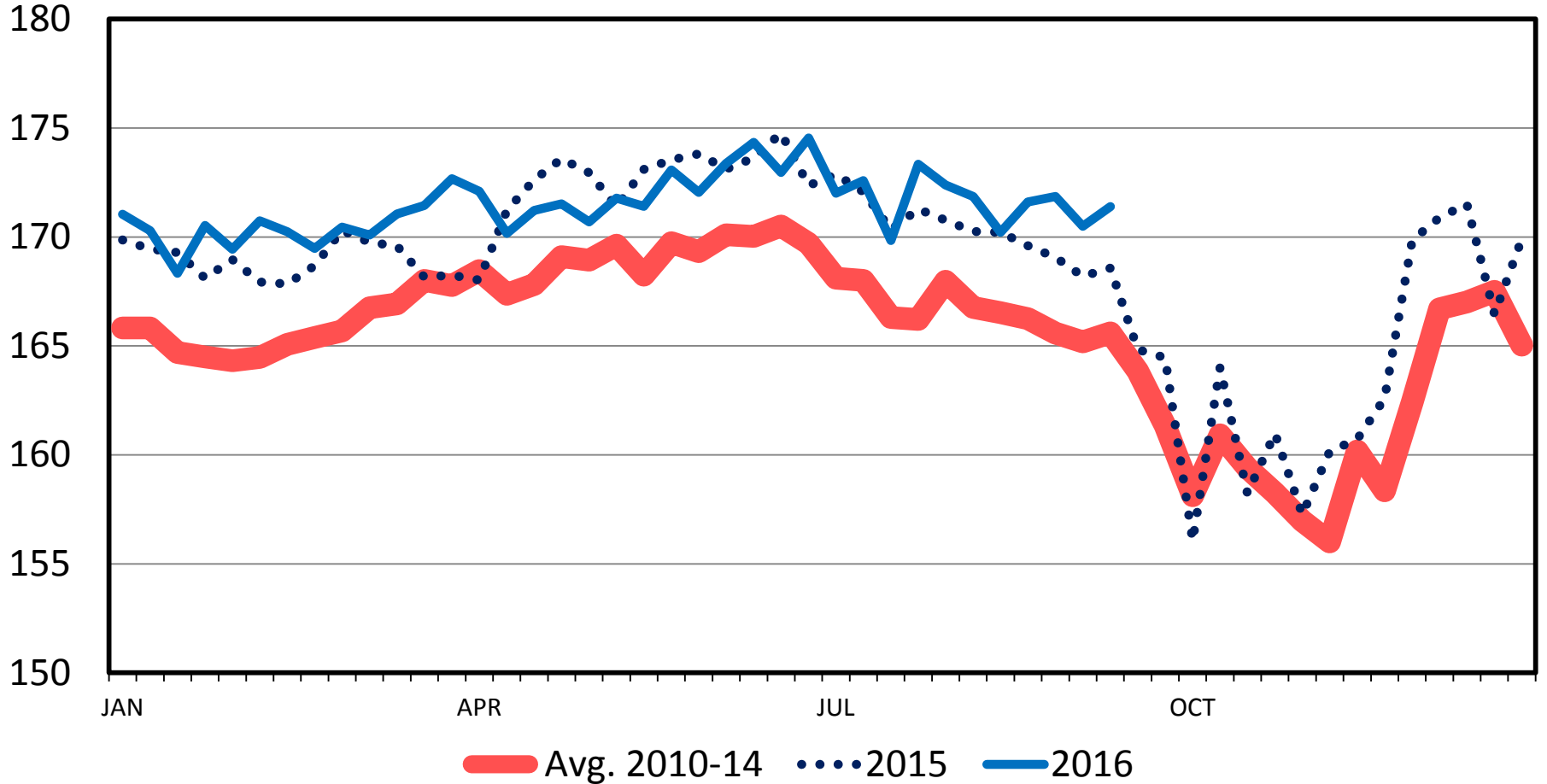


Data Source: USDA-NASS  
Livestock Marketing Information Center

# BROILER CHICKS PLACED

Weekly

Mil. Birds

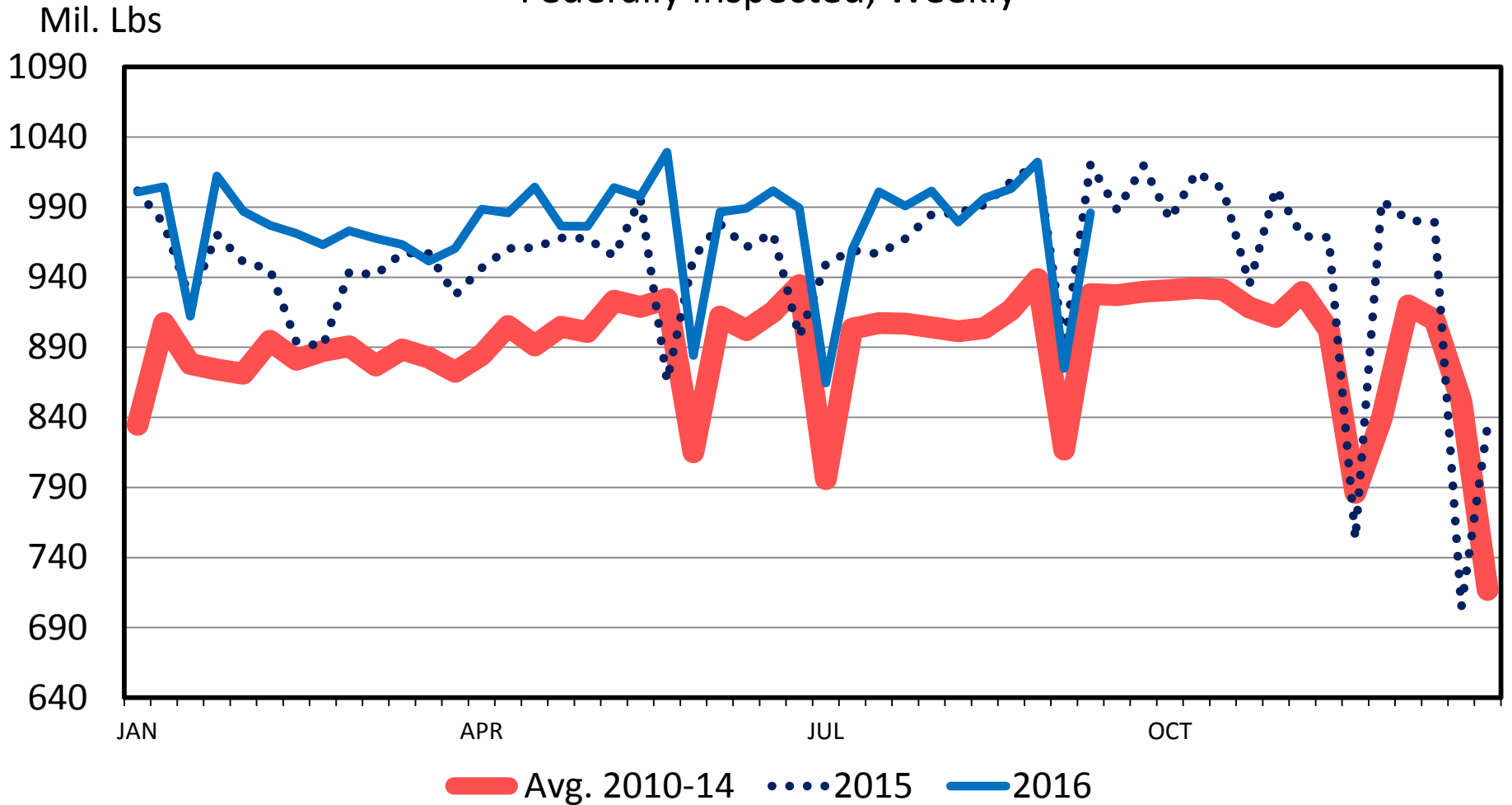


Data Source: USDA-NASS  
Livestock Marketing Information Center



# BROILER PRODUCTION

Federally Inspected, Weekly

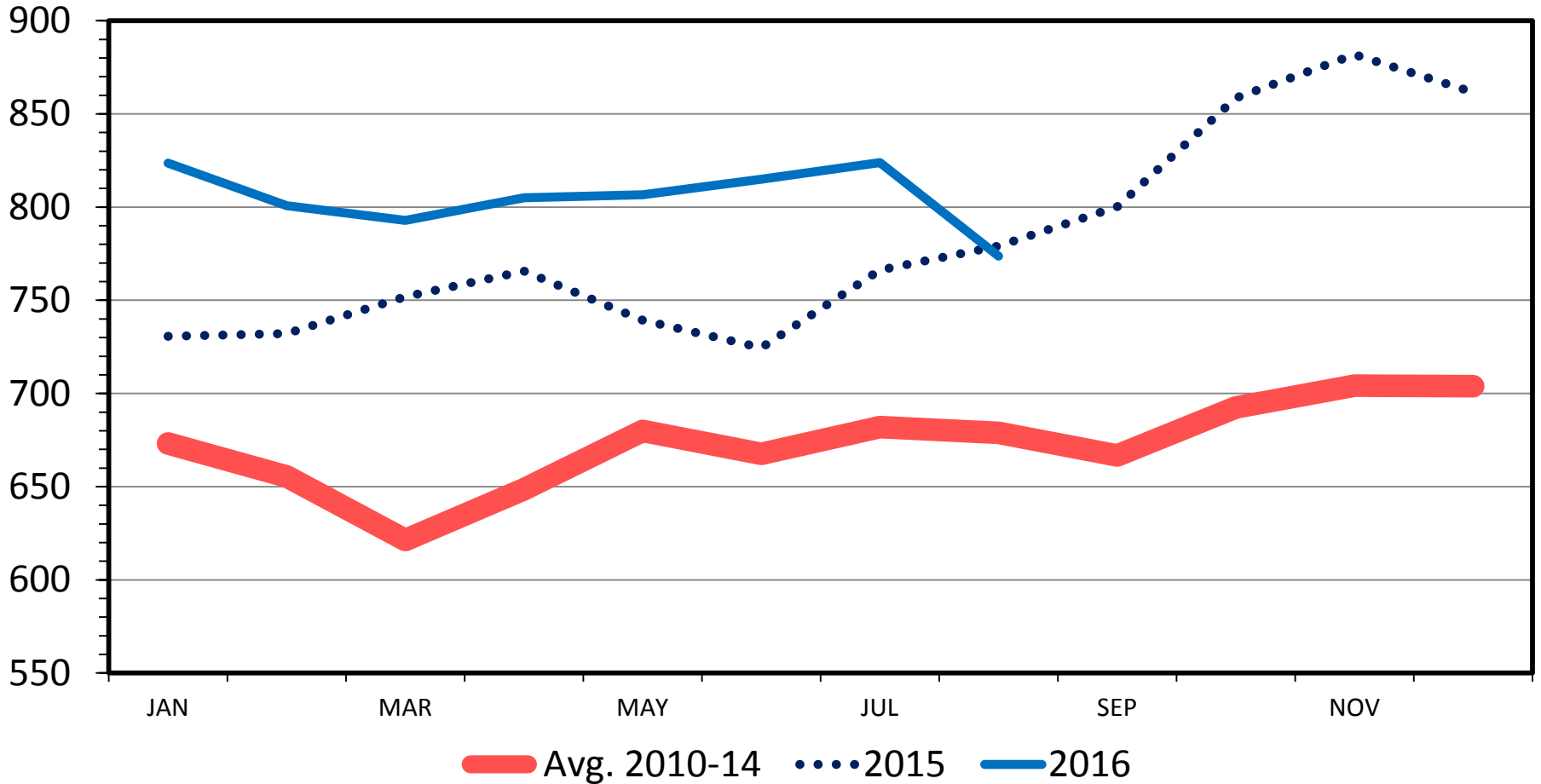


Data Source: USDA-AMS & USDA-NASS  
Livestock Marketing Information Center

# CHICKEN IN COLD STORAGE

End of the Month

Mil. Pounds



Data Source: USDA/NASS

Livestock Marketing Information Center

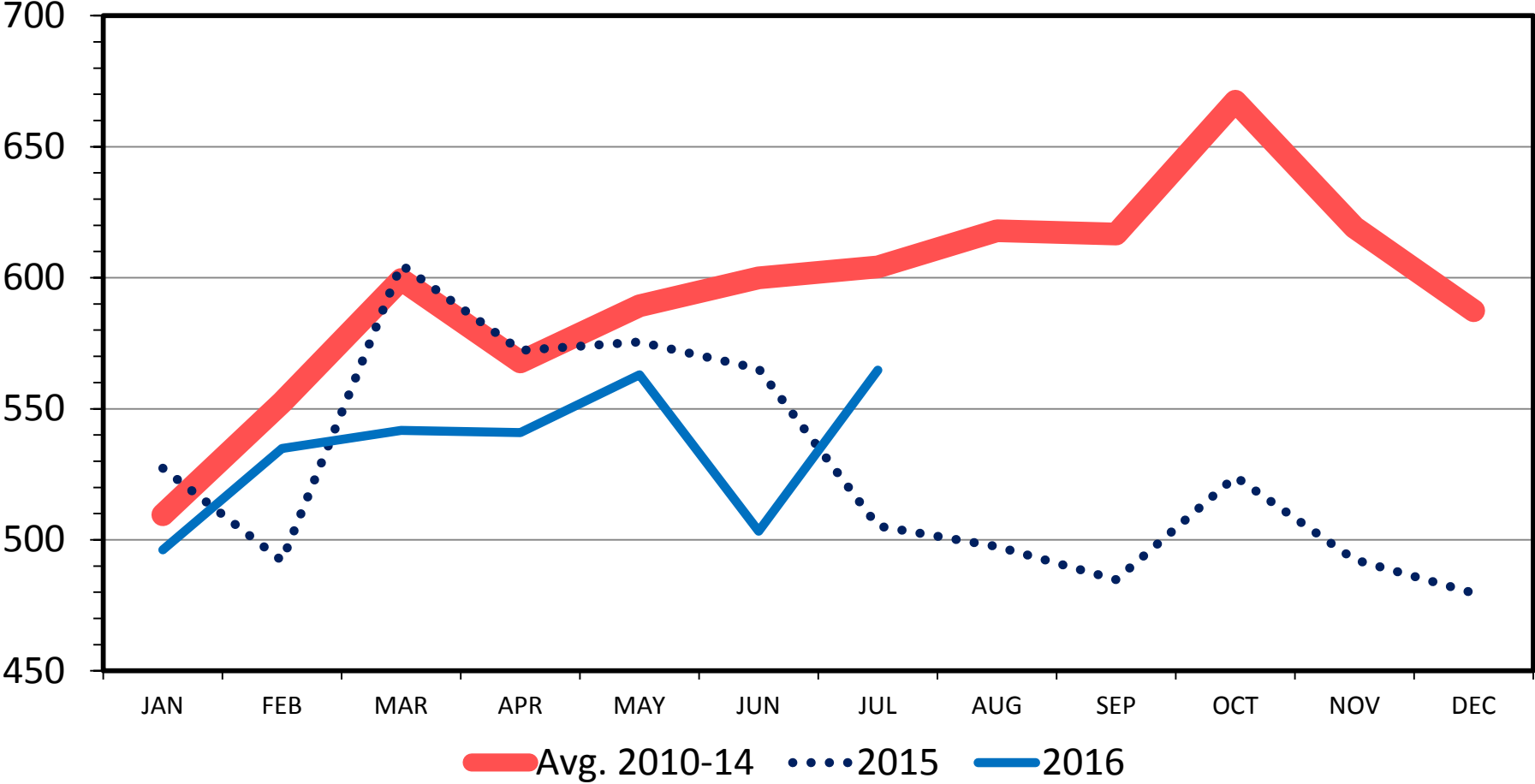
# Trade

---

# US BROILER EXPORTS

RTC Weight, Monthly

Mil. Pounds

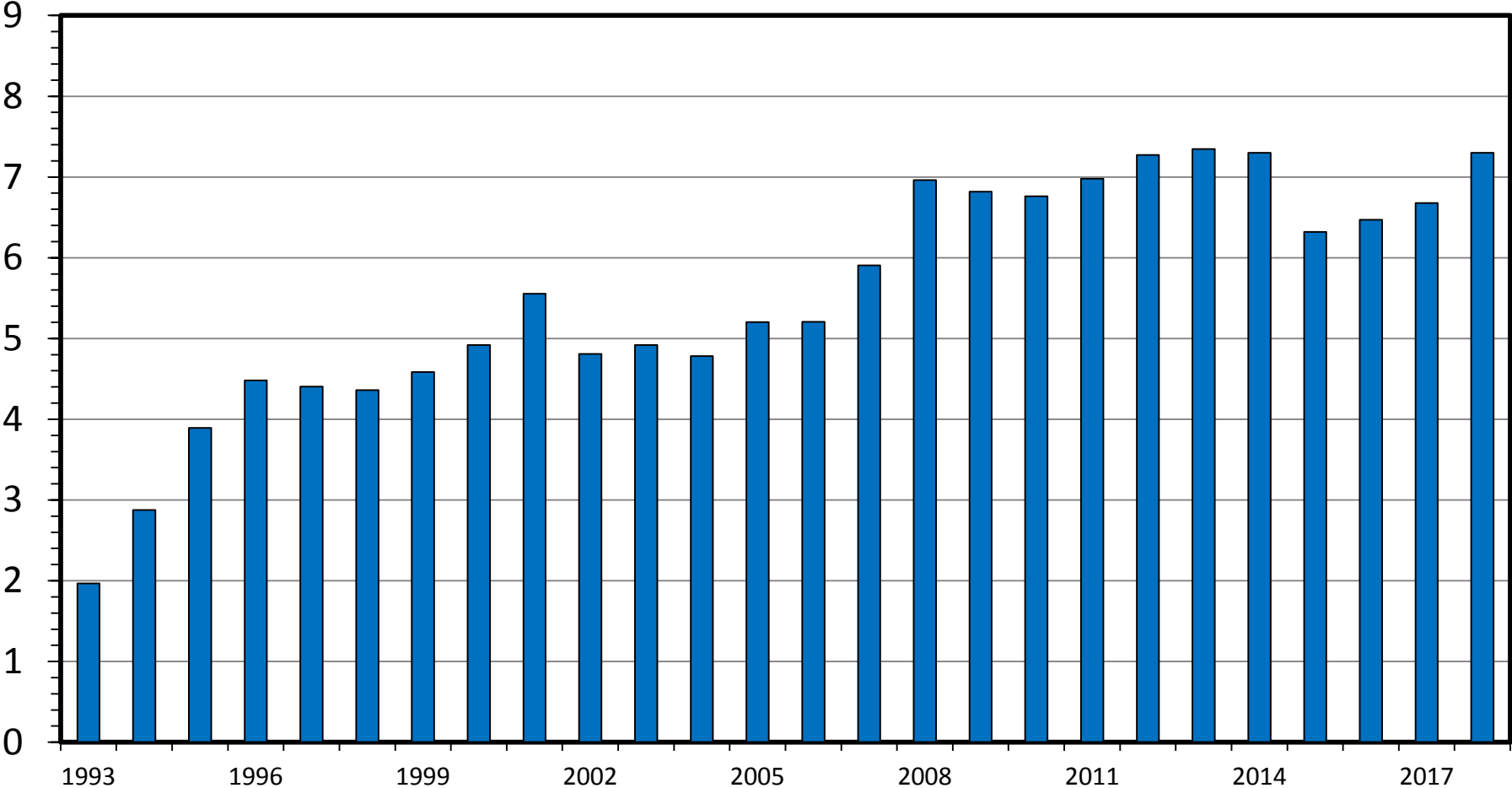


Data Source: USDA-ERS & USDA-FAS  
Livestock Marketing Information Center

# US BROILER EXPORTS

RTC, Annual

Bil. Pounds



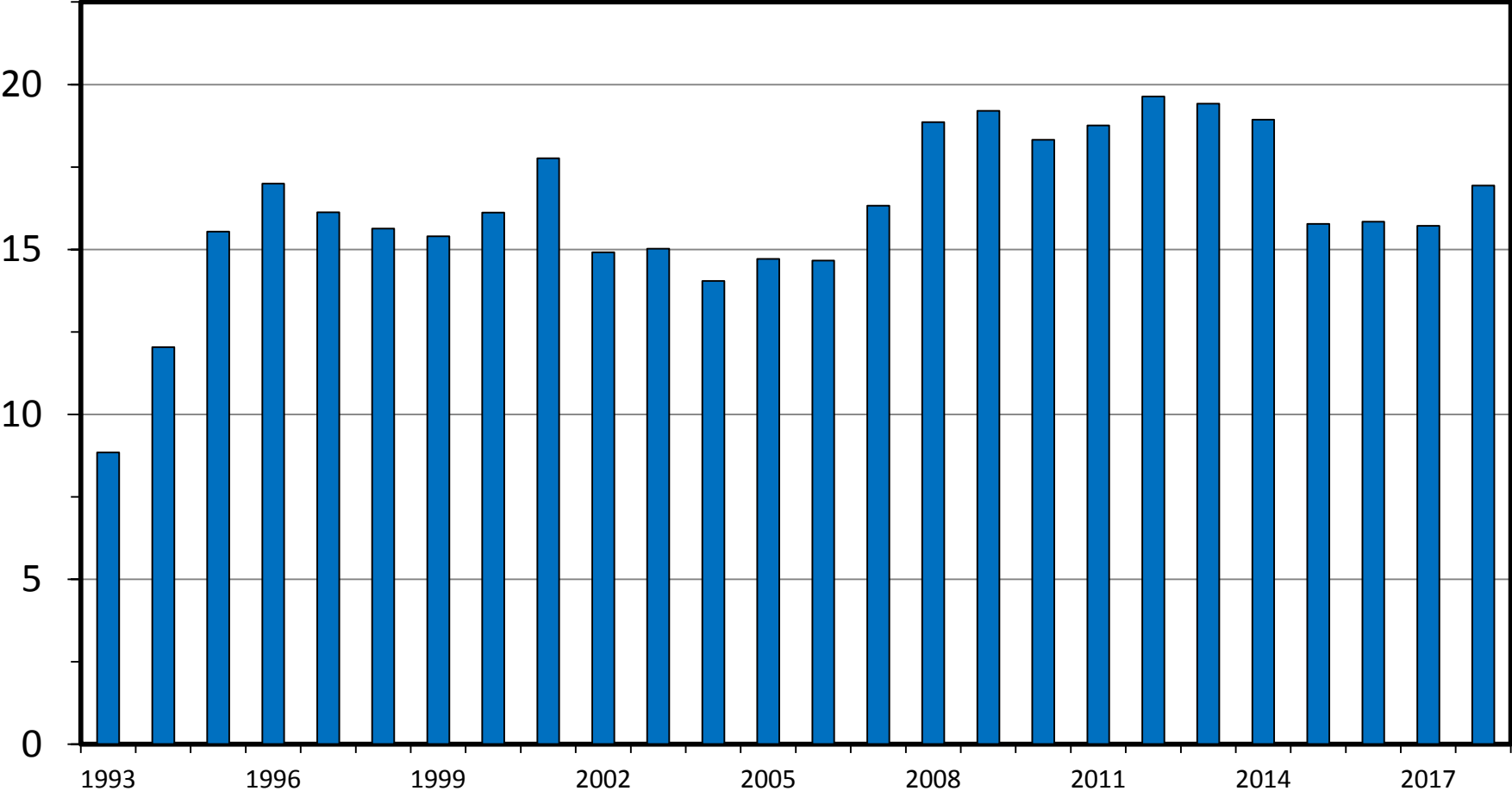
Data Source: USDA-ERS & USDA-FAS, Compiled & Analysis  
by LMIC

Livestock Marketing Information Center

# US BROILER EXPORTS

As a Percentage of Broiler Production, RTC, Annual

Percent



Data Source: USDA-ERS & USDA-FAS, Compiled & Analysis by LMIC

Livestock Marketing Information Center

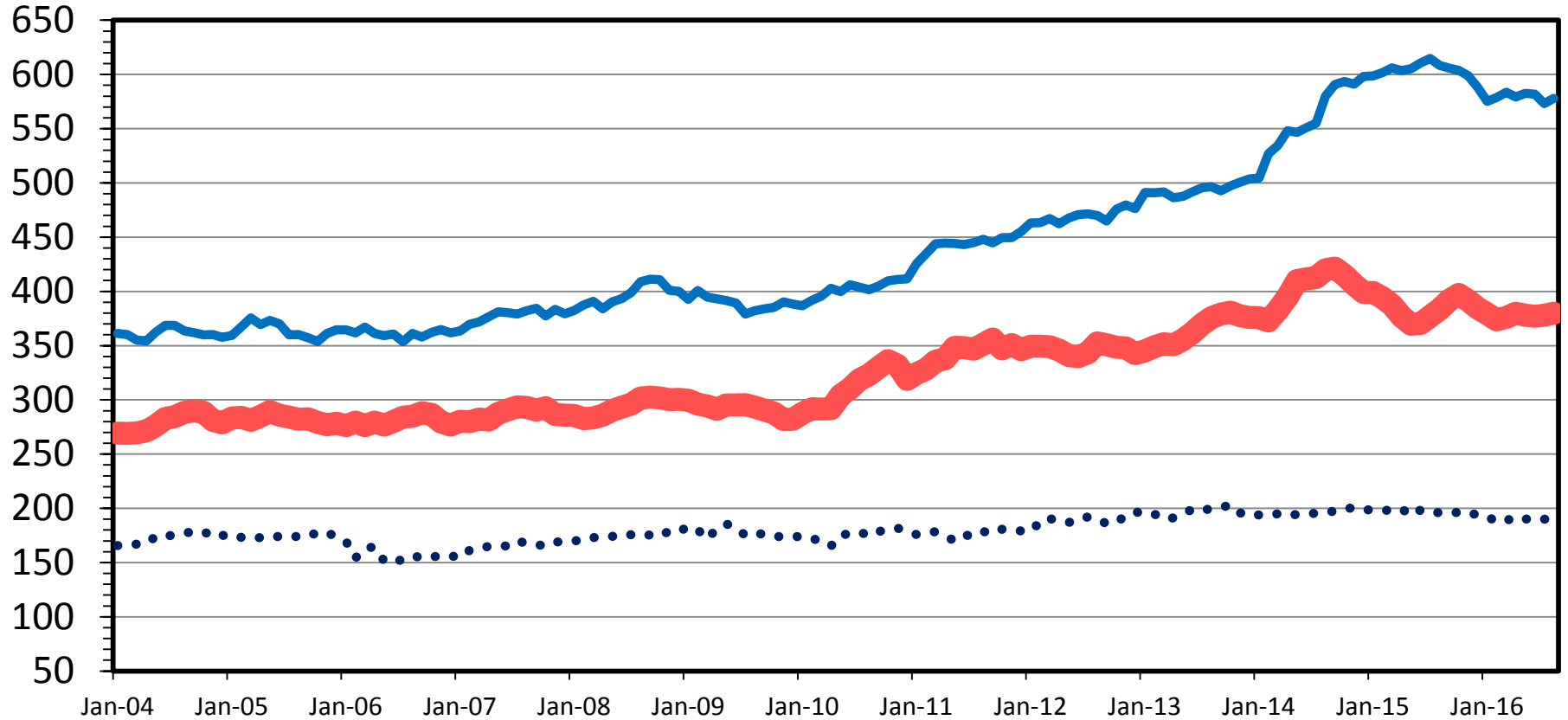
# Prices

---

# RETAIL PRICE COMPARISON

Monthly

Cents Per Pound



 Pork

 Composite Broiler

 All Fresh Beef

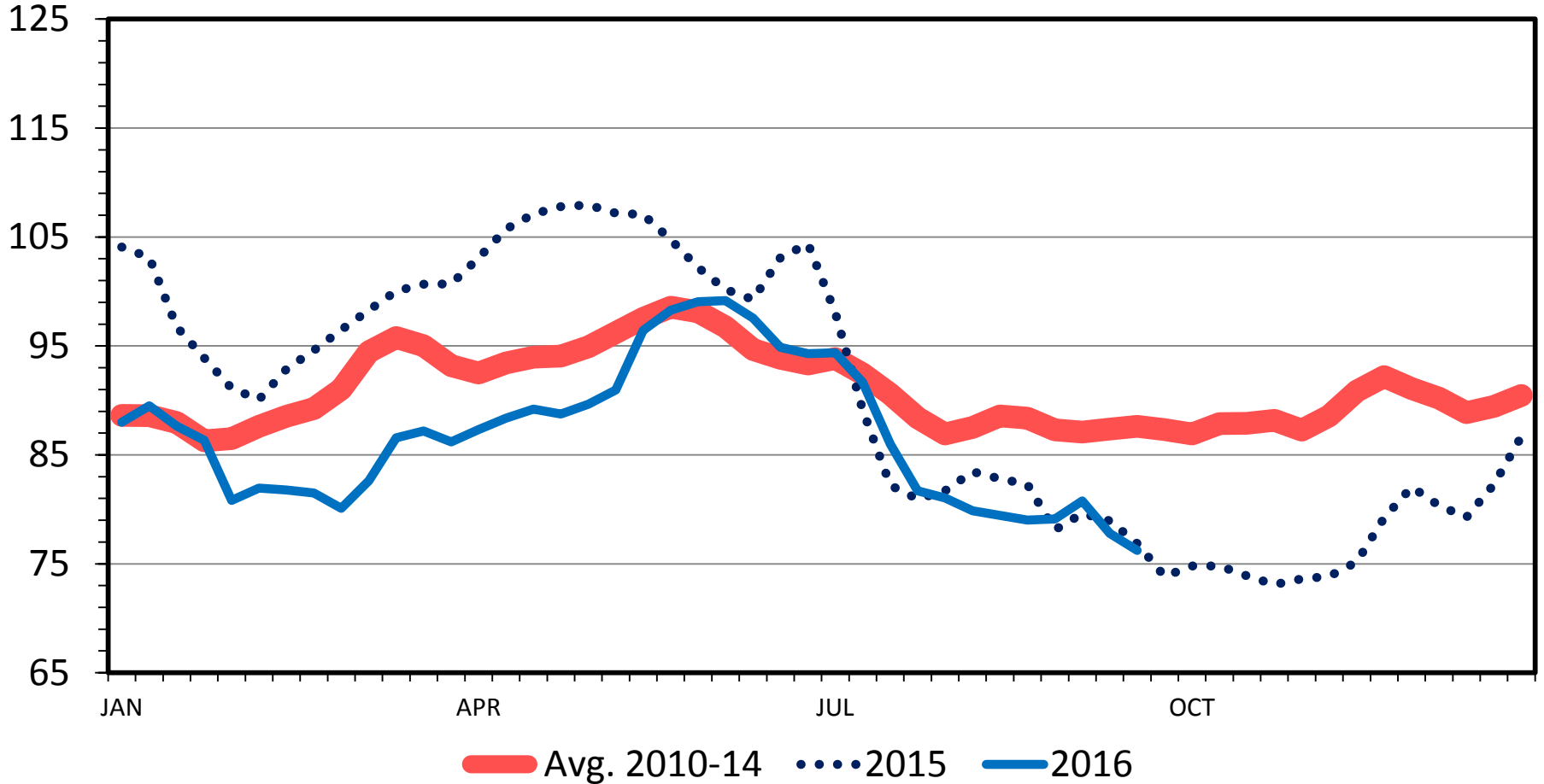
Data Source: Bureau of Labor Statistics & USDA-ERS  
Livestock Marketing Information Center



# BROILER PRICES

## National Composite, Weekly

Cents Per Pound

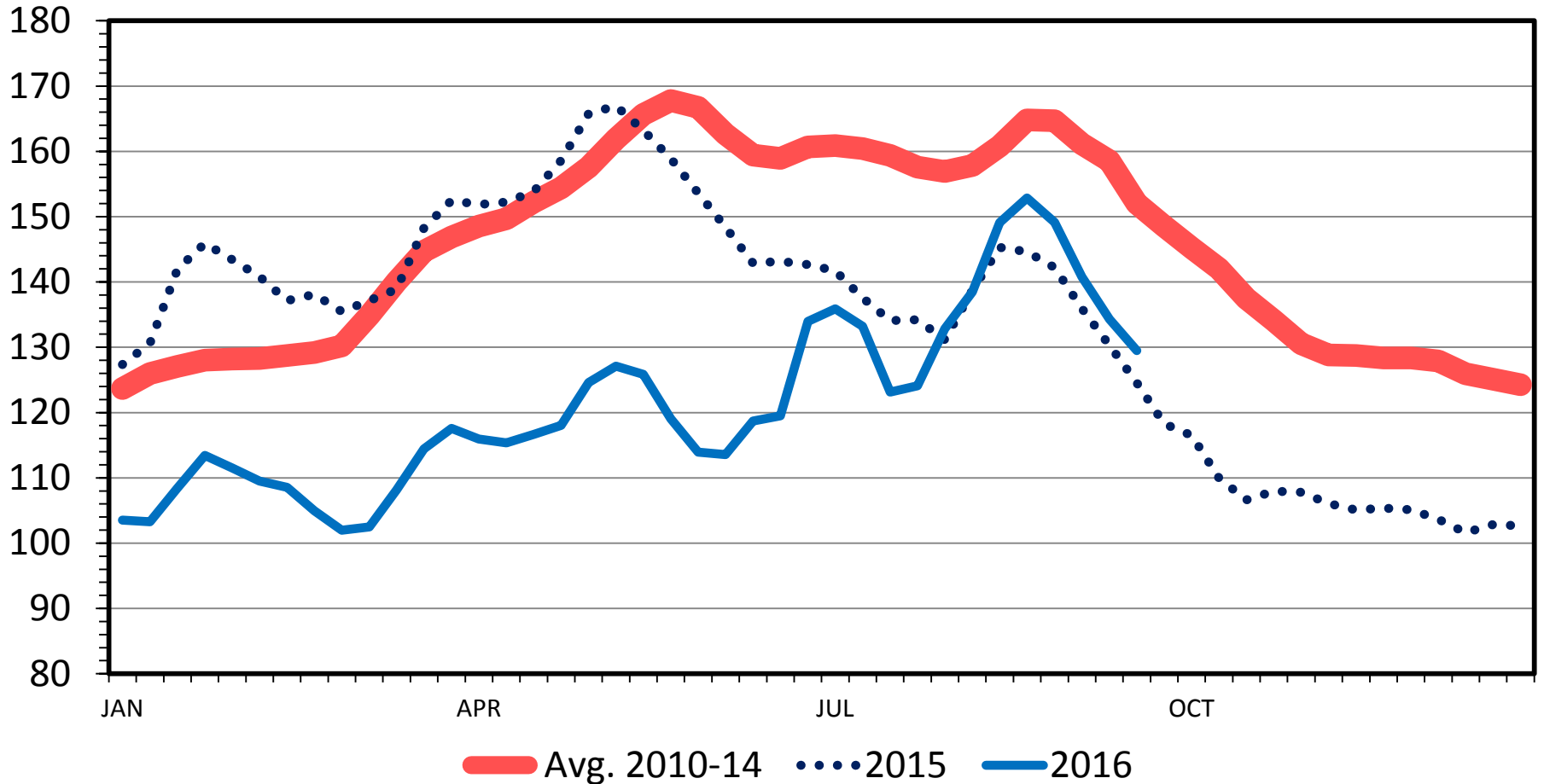


Data Source: USDA-AMS  
Livestock Marketing Information Center

# WHOLESALE CHICKEN BREAST PRICES

Skinless/Boneless, Northeast, Truckload, Weekly

Cents Per Pound

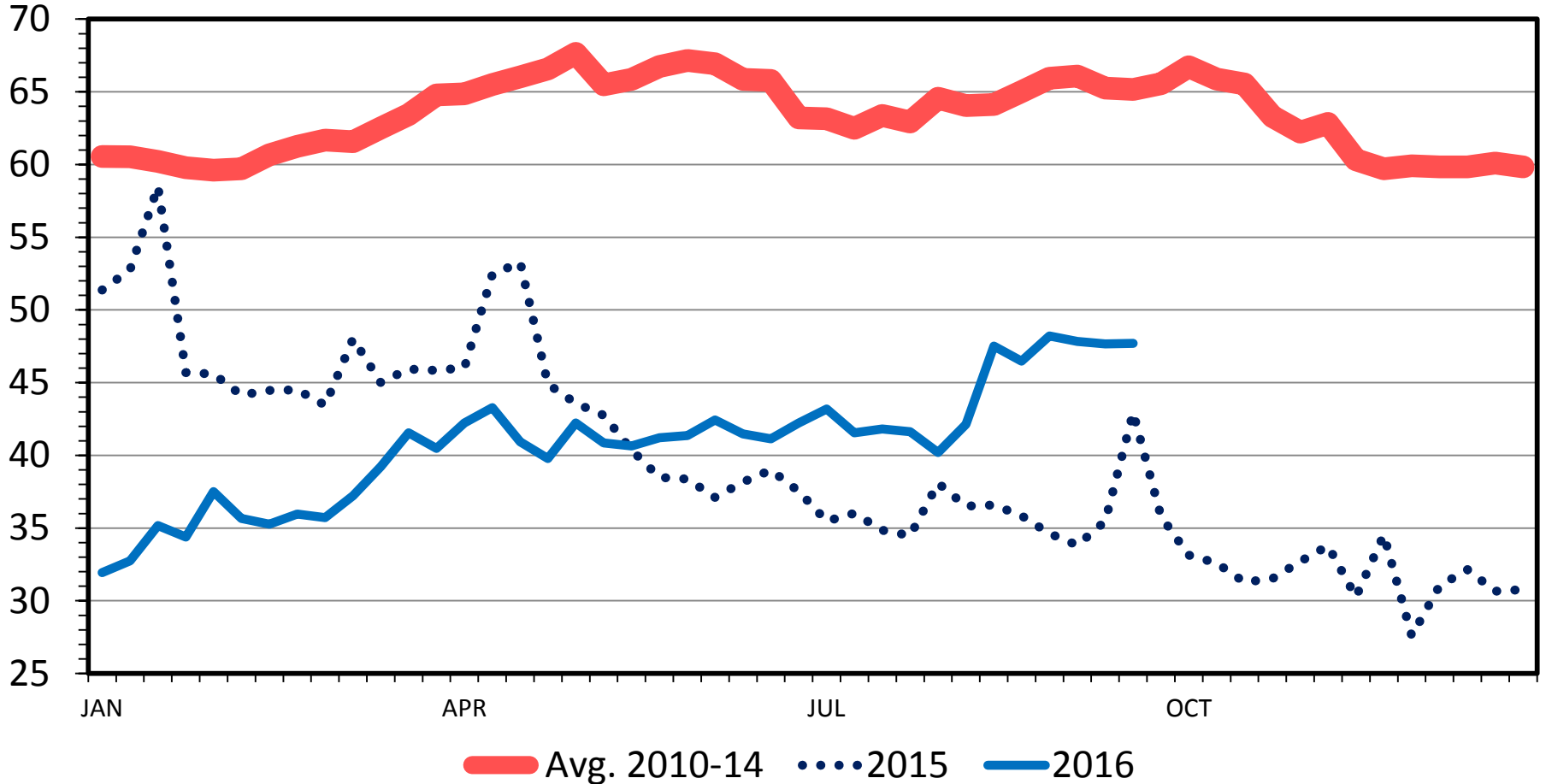


Data Source: USDA-AMS  
Livestock Marketing Information Center

# WHOLESALE CHICKEN LEG PRICES

Northeast, Truckload, Weekly

Cents Per Pound

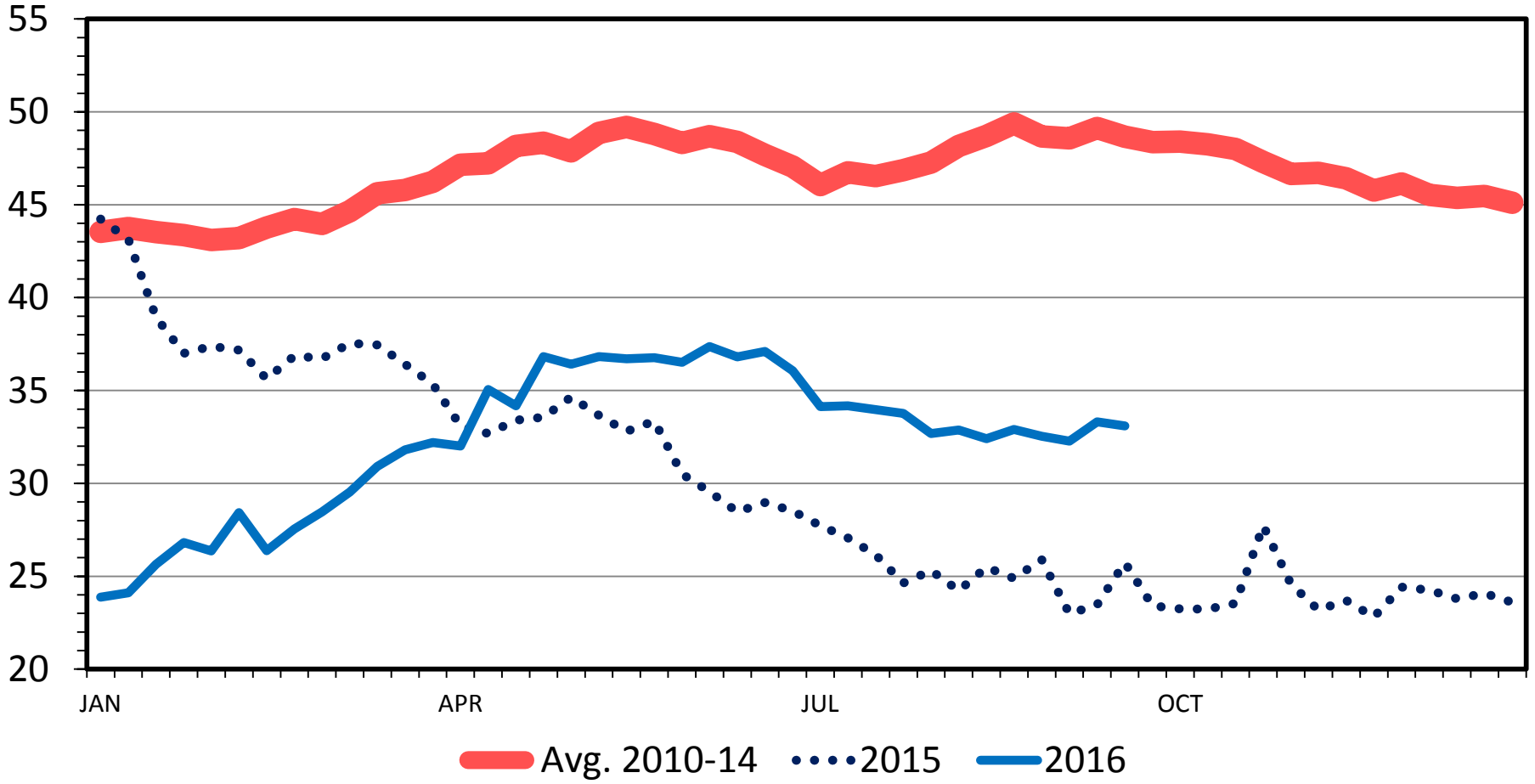


Data Source: USDA-AMS  
Livestock Marketing Information Center

# WHOLESALE CHICKEN LEG QUARTER PRICES

Northeast, Truckload, Weekly

Cents Per Pound

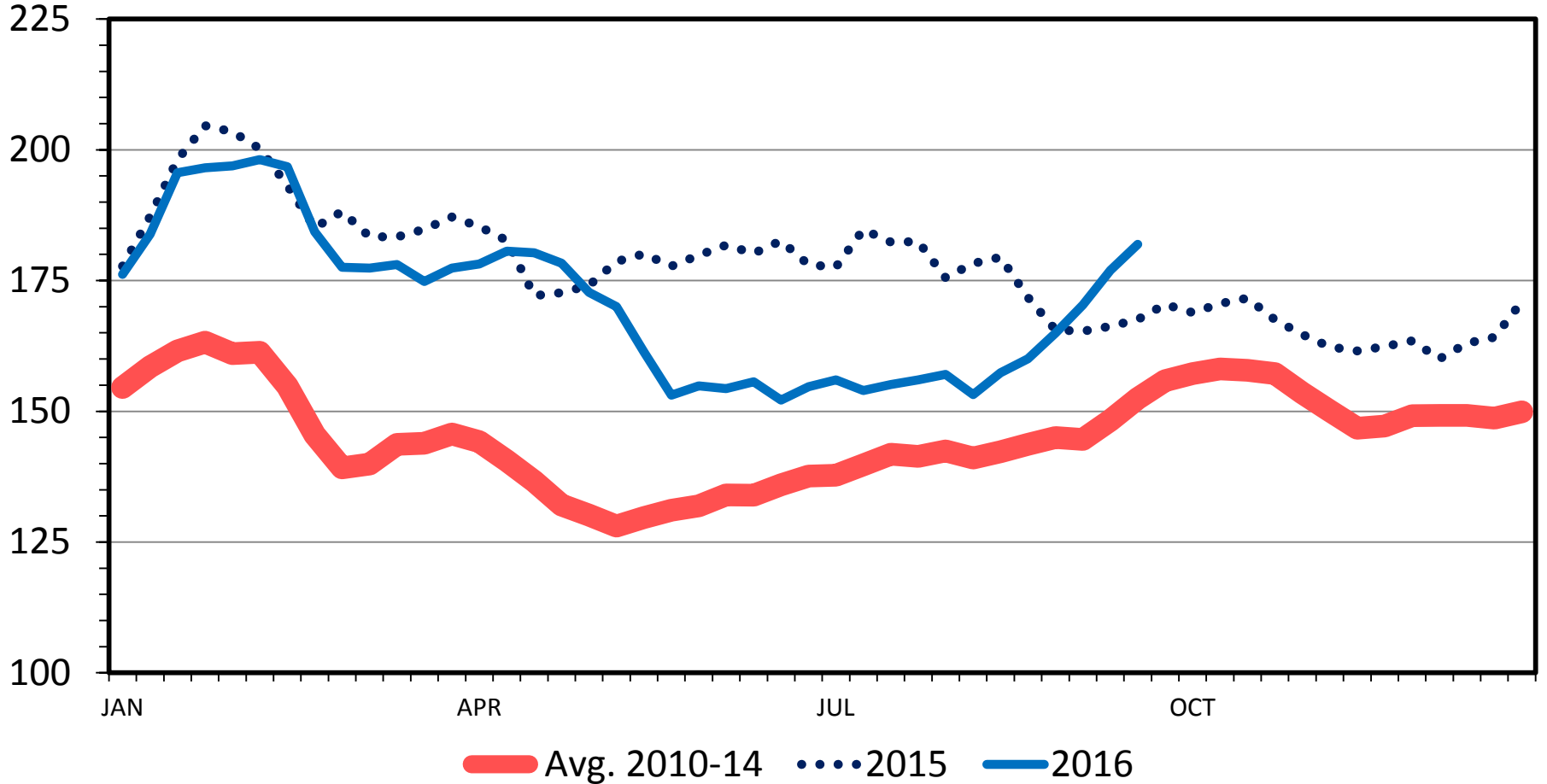


Data Source: USDA-AMS  
Livestock Marketing Information Center

# WHOLESALE CHICKEN WING PRICES

Northeast, Truckload, Weekly

Cents Per Pound



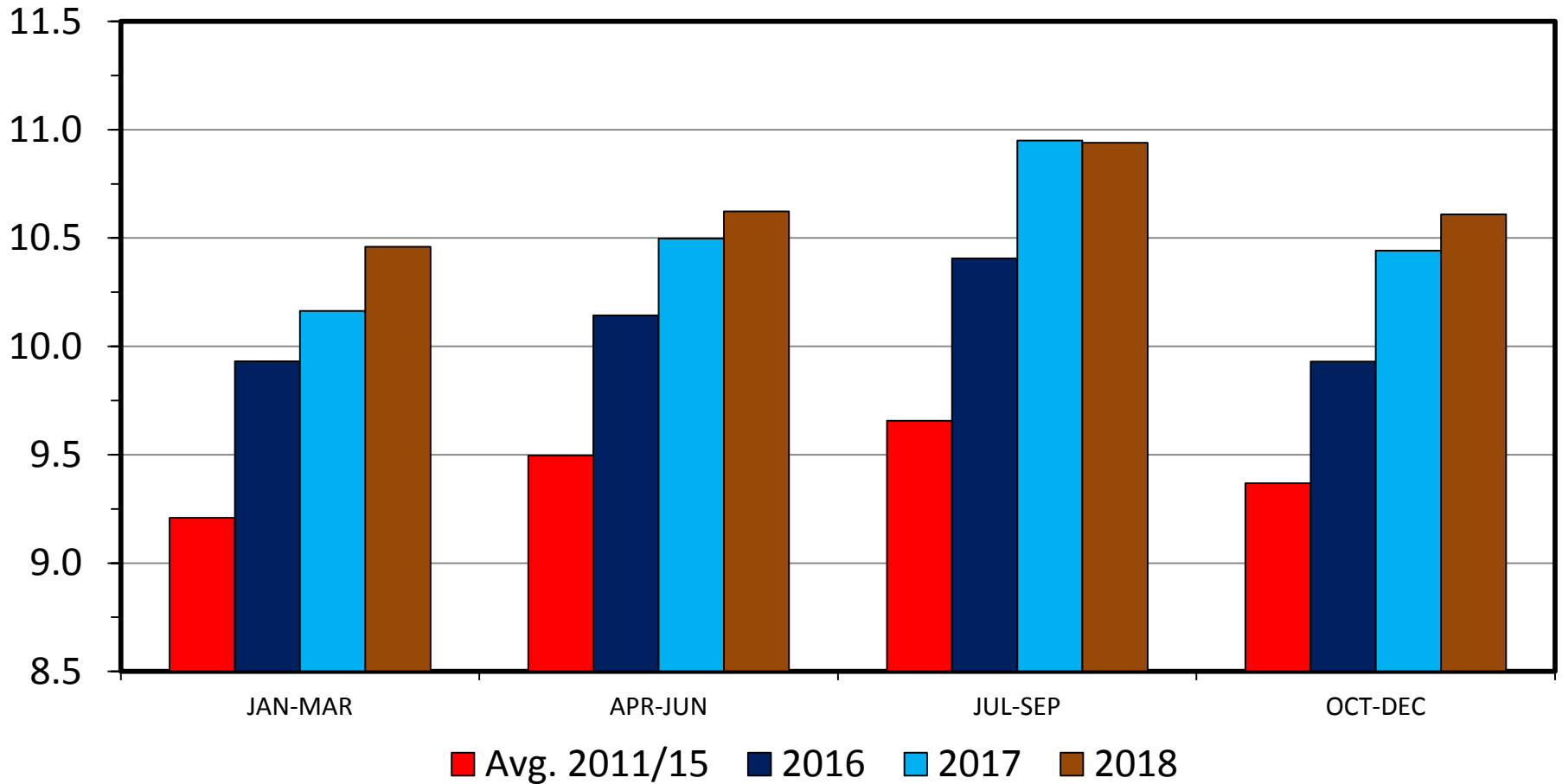
Data Source: USDA-AMS

Livestock Marketing Information Center

# RTC BROILER PRODUCTION

## US, Quarterly

Bil. Pounds



Data Source: USDA-NASS, Forecasts by  
LMIC

Livestock Marketing Information Center

# Big Issues

---

- Trade
  - Recovering markets
- Production Systems
- Diseases
  - Related to trade

# **Kissing Chickens is Bad for Your Health, CDC Warns**

Washington Post, 9/21/16