

Peanut Report

2016 Southern Region Agricultural Outlook Conference

September 27, 2016

George Lovatt

Lovatt & Rushing Inc.

Final USDA 2014 Crop Estimate

Area	Harvested Acres (M)	Yield per Harvested Acre (lbs.)	Total Production (Tons)
ALABAMA	173	3,200	276,800
FLORIDA	167	4,000	334,000
GEORGIA	591	4,100	1,211,550
MISSISSIPPI	<u>31</u>	4,000	62,000
SOUTHEAST	962	3,918	1,884,350
OKLAHOMA	11	4,000	22,000
TEXAS	127	3,850	244,475
NEW MEXICO	<u>5</u>	3,100	7,750
SOUTHWEST	143	3,835	274,225
N. CAROLINA	93	4,300	199,950
S. CAROLINA	108	3,800	205,200
VIRGINIA	<u>19</u>	4,350	41,325
VIR/CAR	220	4,059	446,475
TOTAL U.S.	1325	3,932	2,605,050

Graded Tons by Area by Type

	SE	SW	V-C	TOTAL
Virginia	11	110	362	483
Spanish	1	47	0	48
Valencia	0	13	0	13
Runner	<u>1,873</u>	<u>105</u>	<u>83</u>	<u>2,061</u>
	1,885	275	445	2,605

2,605,050

2,605



2014 Supply / Demand - Lovatt's Estimate

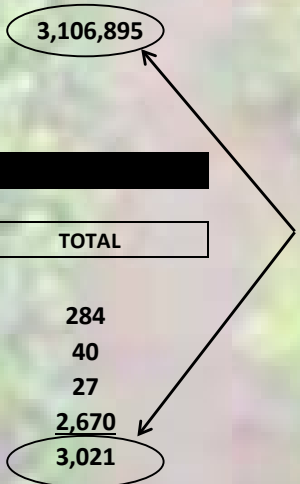
<u>Supply</u>	Runners	Spanish	Virginia	Valencia	Total	YoY Δ
<i>Carry In 8/1/14</i>						
Edible	295	14	123	3	435	
Farmer Stock	<u>423</u>	<u>16</u>	<u>57</u>	<u>12</u>	<u>508</u>	
Total Carry-In	718	30	180	15	943	-32%
Production	2,061	48	483	13	2,605	24%
Add Back 2013 Deduction	21	0	11	0	32	
Unexplained Adjustment	72	0	0	0	72	?????
SMK Adjustment/Fires	(11)				(11)	
Imports	51	0	0	0	51	2%
Total Available	2,912	78	674	28	3,692	5%
<u>Demand</u>						
U.S. Edible	1,510	25	261	16	1,812	3.4%
U.S. Seed	130	4	22	2	158	22%
Total U.S. Demand	1,640	29	283	18	1,970	4.6%
Export Edible/Seed	416	23	54	2	495	-4%
Export Roast	0	0	68	1	69	-14%
Export Farmer Stock	22	0	0	0	22	N/A
Total Export	438	23	122	3	586	-2%
Total Crushings/Feed	82	0	0	0	82	-8%
Total Demand	2,160	52	405	21	2,638	3%
<i>Carry-out 7/31/15</i>						
Edible	295	13	75	3	386	
Farmer Stock	<u>457</u>	<u>13</u>	<u>194</u>	<u>4</u>	<u>668</u>	
Total Carry-Out	752	26	269	7	1,054	12%
Days Carry	127	183	242	122	146	
Stocks/Use Ratio	35%	50%	66%	33%	40%	

Final USDA 2015 Crop Estimate

Area	Harvested Acres (M)	Yield per Harvested Acre (lbs.)	Total Production (Tons)
ALABAMA	197	3,350	329,975
FLORIDA	180	3,650	328,500
GEORGIA	777	4,470	1,736,595
MISSISSIPPI	<u>42</u>	3,600	75,600
SOUTHEAST	1196	4,132	2,470,670
OKLAHOMA	9	3,500	15,750
TEXAS	168	3,500	294,000
NEW MEXICO	<u>5</u>	3,000	7,500
SOUTHWEST	182	3,486	317,250
N. CAROLINA	88	3,400	149,600
S. CAROLINA	83	3,200	132,800
VIRGINIA	<u>19</u>	3,850	36,575
VIR/CAR	190	3,358	318,975
TOTAL U.S.	1568	3,963	3,106,895

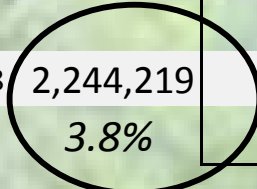
Graded Tons by Area by Type

	SE	SW	V-C	TOTAL
Virginia	9	58	217	284
Spanish	0	40	0	40
Valencia	0	27	0	27
Runner	<u>2,382</u>	<u>194</u>	<u>94</u>	<u>2,670</u>
	2,391	319	311	3,021



PS&P Domestic Usage - Edible Kernels

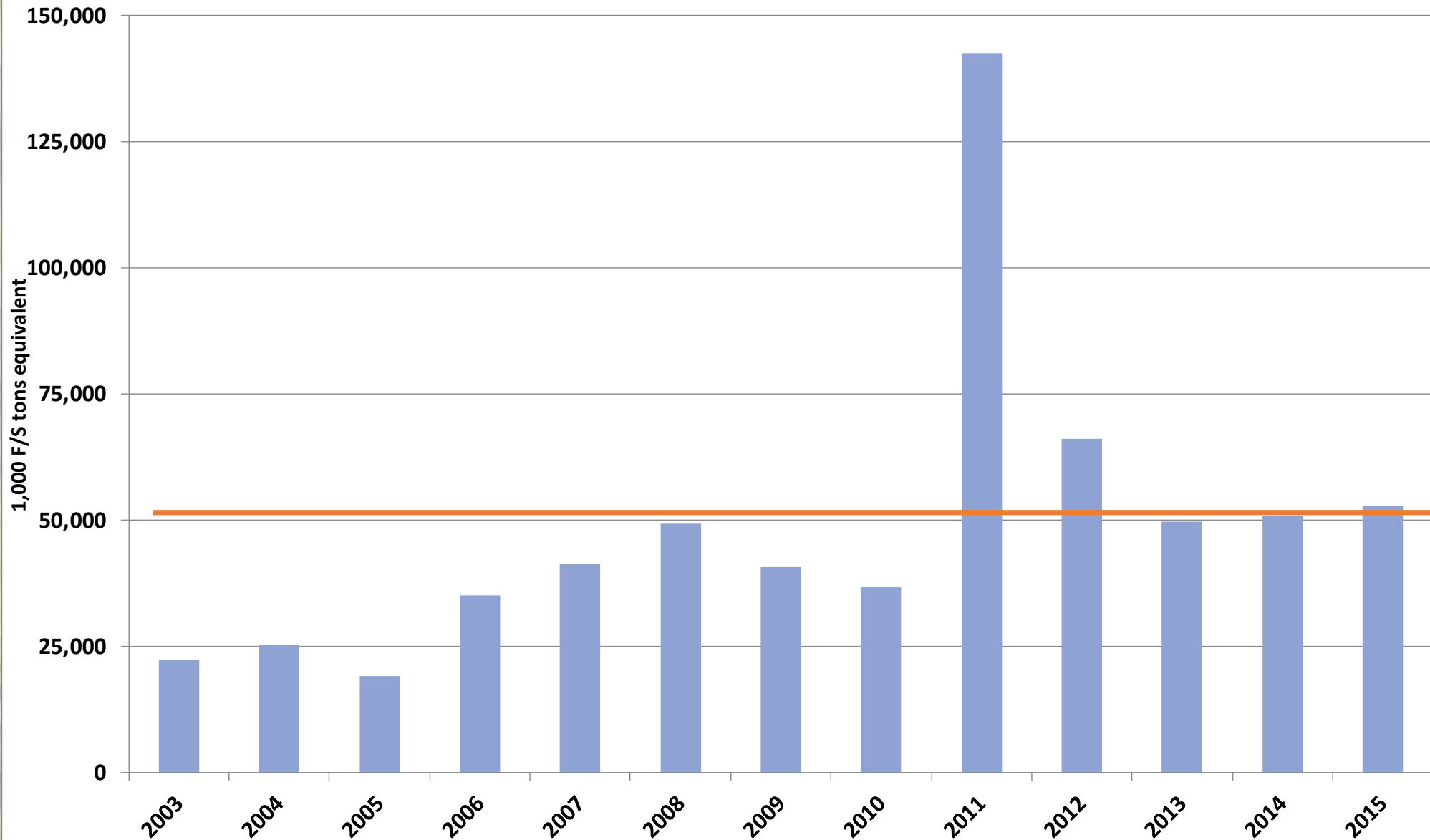
Crop Year	August	September	October	November	December	January	February	March	April	May	June	July	Full Year
2010	186,789	170,372	163,171	163,418	149,742	155,564	160,307	180,176	165,044	170,893	186,837	168,435	2,020,748
2011	182,639	176,285	173,768	177,302	156,923	174,371	161,801	158,337	159,946	168,607	168,168	144,008	2,002,155
<i>YoY % Change</i>	-2.2%	3.5%	6.5%	8.5%	4.8%	12.1%	0.9%	-12.1%	-3.1%	-1.3%	-10.0%	-14.5%	-0.9%
2012	176,092	167,145	172,133	155,898	145,708	164,707	162,871	170,566	172,344	185,225	179,234	178,880	2,030,803
<i>YoY % Change</i>	-3.6%	-5.2%	-0.9%	-12.1%	-7.1%	-5.5%	0.7%	7.7%	7.8%	9.9%	6.6%	24.2%	1.4%
2013	176,444	169,138	183,894	173,125	151,937	161,783	162,609	188,248	163,403	171,071	187,200	183,943	2,072,795
<i>YoY % Change</i>	0.2%	1.2%	6.8%	11.1%	4.3%	-1.8%	-0.2%	10.4%	-5.2%	-7.6%	4.4%	2.8%	2.1%
2014	180,941	187,914	197,031	171,509	167,712	186,006	170,713	187,211	162,623	178,138	189,731	181,738	2,161,267
<i>YoY % Change</i>	2.5%	11.1%	7.1%	-0.9%	10.4%	15.0%	5.0%	-0.6%	-0.5%	4.1%	1.4%	-1.2%	4.3%
2015	188,283	193,120	183,412	176,367	184,972	185,739	173,530	178,350	189,941	195,661	204,803	190,041	2,244,219
<i>YoY % Change</i>	4.1%	2.8%	-6.9%	2.8%	10.3%	-0.1%	1.7%	-4.7%	16.8%	9.8%	7.9%	4.6%	3.8%
2015 YTD Cumulative	188,283	381,403	564,815	741,182	926,154	1,111,893	1,285,423	1,463,773	1,653,714	1,849,375	2,054,178	2,244,219	2,244,219
<i>YTD % Change</i>	4.1%	3.4%	-0.2%	0.5%	2.3%	1.9%	1.9%	1.0%	2.6%	3.3%	3.8%	3.8%	3.8%



Imports converted to F/S

Crop Year	2003	2004	2005	2006	2007	2008	2009	2010	2011	2012	2013	2014	2015	YoY Change
August	894	2,526	547	1,792	6,202	8,507	5,387	3,608	5,364	13,478	4,258	3,658	5,628	54%
YTD	894	2,526	547	1,792	6,202	8,507	5,387	3,608	5,364	13,478	4,258	3,658	5,628	54%
September	1,722	490	866	1,169	2,065	7,770	3,168	2,564	6,394	9,787	3,858	3,645	4,264	17%
YTD	2,616	3,016	1,413	2,961	8,266	16,278	8,554	6,173	11,758	23,265	8,116	7,303	9,892	35%
October	1,171	452	480	3,594	4,525	6,408	3,031	1,665	5,921	5,292	5,166	5,239	4,539	-13%
YTD	3,787	3,467	1,893	6,555	12,791	22,686	11,586	7,838	17,679	28,557	13,282	12,542	14,431	15%
November	640	658	903	1,931	1,023	2,175	1,992	3,322	8,606	3,588	4,424	3,713	3,923	6%
YTD	4,427	4,126	2,796	8,486	13,814	24,861	13,578	11,160	26,286	32,145	17,706	16,255	18,354	13%
December	594	622	1,369	980	2,772	1,528	2,666	2,649	13,972	4,723	2,791	3,764	5,650	50%
YTD	5,021	4,747	4,166	9,466	16,586	26,389	16,244	13,809	40,257	36,868	20,497	20,019	24,004	20%
January	1,412	420	1,168	3,695	2,319	2,246	2,372	3,774	15,961	4,461	4,269	4,508	3,915	-13%
YTD	6,433	5,167	5,334	13,160	18,905	28,635	18,616	17,583	56,218	41,329	24,766	24,527	27,919	14%
February	389	1,253	1,367	3,031	1,842	1,716	4,125	3,620	23,797	3,222	3,508	3,091	3,889	26%
YTD	6,821	6,420	6,701	16,191	20,747	30,351	22,741	21,203	80,015	44,551	28,274	27,618	31,808	15%
March	3,209	9,650	4,521	6,116	3,466	3,770	5,231	4,382	22,327	3,389	3,767	4,354	4,259	-2%
YTD	10,030	16,070	11,222	22,307	24,213	34,121	27,972	25,584	102,342	47,940	32,041	31,972	36,067	13%
April	4,871	7,866	4,530	5,094	7,521	3,497	2,583	3,144	11,777	4,611	4,578	4,784	4,081	-15%
YTD	14,902	23,936	15,751	27,401	31,734	37,619	30,555	28,728	114,119	52,551	36,619	36,756	40,148	9%
May	2,746	532	768	1,447	2,901	4,065	3,094	2,024	6,503	4,209	5,092	4,155	4,159	0%
YTD	17,648	24,467	16,520	28,847	34,635	41,683	33,648	30,752	120,622	56,760	41,711	40,911	44,307	8%
June	2,490	468	1,256	2,072	3,242	4,056	3,724	2,488	8,693	4,266	3,816	5,420	4,317	-20%
YTD	20,138	24,935	17,776	30,920	37,877	45,739	37,373	33,240	129,315	61,026	45,527	46,331	48,624	5%
July	2,260	382	1,364	4,296	3,520	3,549	3,325	3,537	13,204	5,058	4,300	4,641	4,825	4%
Total	22,398	25,317	19,139	35,215	41,397	49,288	40,698	36,777	142,519	66,084	49,827	50,972	53,449	5%

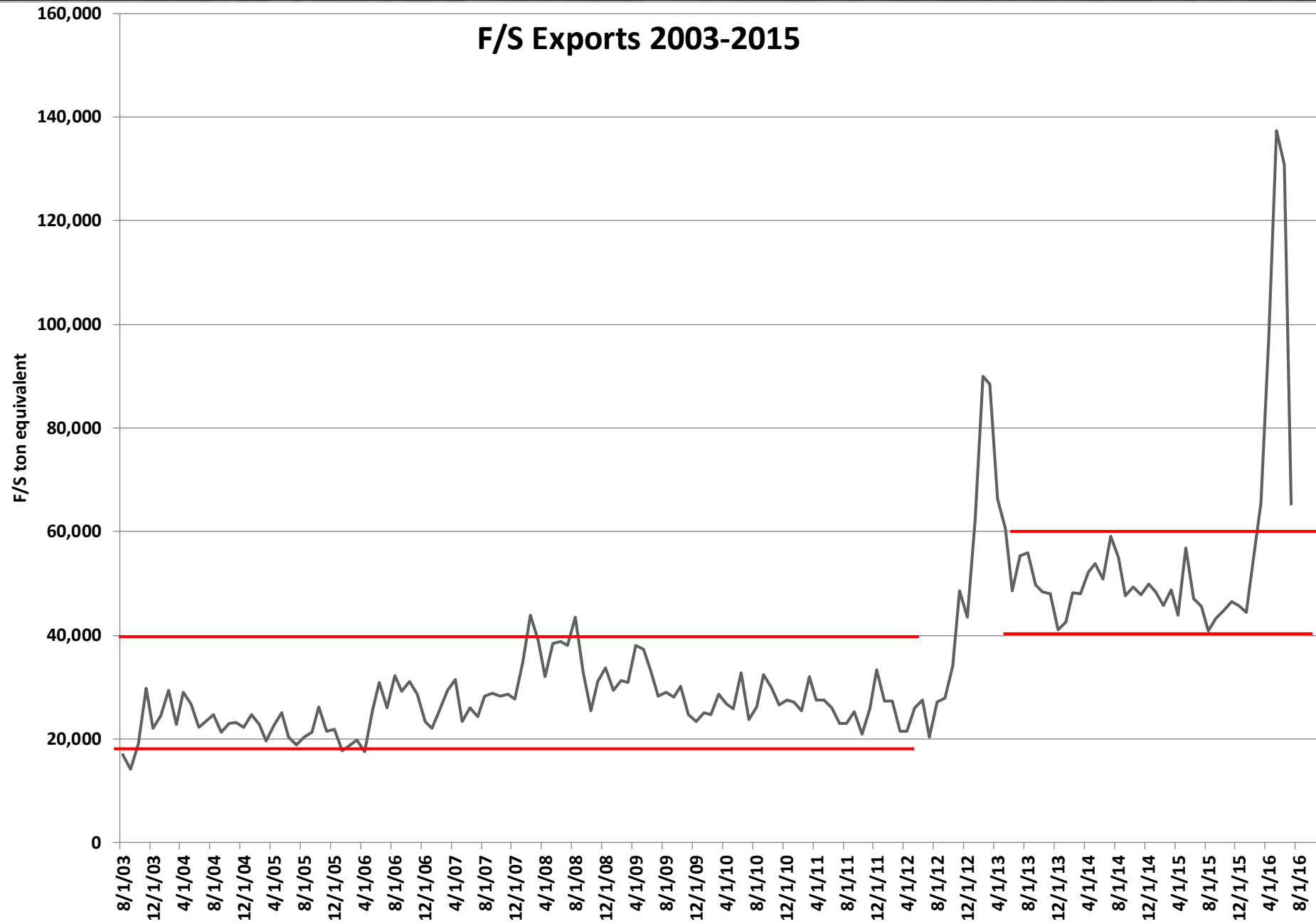
Imports of Peanuts into the U.S.



Exports converted to F/S

Crop Year	2003	2004	2005	2006	2007	2008	2009	2010	2011	2012	2013	2014*	2015*
August	17,037	24,713	20,451	32,142	28,274	43,502	29,013	26,285	23,088	27,201	55,936	55,023	40,819
YTD	17,037	24,713	20,451	32,142	28,274	43,502	29,013	26,285	23,088	27,201	55,936	55,023	40,819
September	14,255	21,414	21,286	29,126	28,779	33,056	28,165	32,499	25,334	27,918	49,738	47,715	43,405
YTD	31,292	46,127	41,737	61,268	57,053	76,558	57,178	58,784	48,422	55,119	105,674	102,738	84,224
October	19,024	23,101	26,197	31,133	28,285	25,533	30,201	29,934	21,015	34,169	48,472	49,350	44,860
YTD	50,316	69,228	67,934	92,401	85,338	102,091	87,379	88,718	69,437	89,288	154,146	152,088	129,084
November	29,736	23,201	21,475	28,691	28,650	31,185	24,741	26,599	25,851	48,602	48,003	47,842	46,483
YTD	80,052	92,429	89,409	121,092	113,988	133,276	112,120	115,317	95,288	137,890	202,149	199,930	175,567
December	22,105	22,310	21,859	23,471	27,748	33,804	23,399	27,544	33,283	43,498	41,075	49,823	45,848
YTD	102,157	114,739	111,268	144,563	141,736	167,080	135,519	142,861	128,570	181,388	243,224	249,753	221,415
January	24,560	24,614	17,821	22,097	34,703	29,392	25,020	27,071	27,302	62,354	42,614	48,329	44,477
YTD	126,717	139,353	129,089	166,660	176,439	196,472	160,539	169,932	155,872	243,742	285,838	298,082	265,892
February	29,426	22,776	18,599	25,598	43,952	31,226	24,788	25,496	27,348	90,018	48,247	45,860	55,653
YTD	156,143	162,129	147,688	192,258	220,391	227,698	185,327	195,428	183,220	333,760	334,085	343,942	321,545
March	22,839	19,587	19,812	29,490	39,004	30,937	28,691	32,106	21,420	88,472	47,971	48,829	65,508
YTD	178,982	181,716	167,500	221,748	259,395	258,635	214,018	227,534	204,639	422,232	382,056	392,771	387,053
April	29,070	22,548	17,588	31,427	32,039	38,079	26,743	27,587	21,539	66,221	52,119	43,895	97,398
YTD	208,052	204,264	185,088	253,175	291,434	296,714	240,761	255,121	226,179	488,453	434,175	436,666	484,451
May	26,862	25,073	25,398	23,471	38,469	37,313	25,826	27,505	26,029	60,597	53,782	56,933	137,293
YTD	234,914	229,337	210,486	276,646	329,903	334,027	266,587	282,626	252,207	549,050	487,957	493,599	621,744
June	22,283	20,422	30,898	26,065	38,824	33,300	32,847	25,964	27,572	48,617	50,892	47,158	130,747
YTD	257,197	249,759	241,384	302,711	368,727	367,327	299,434	308,590	279,779	597,667	538,849	540,757	752,491
July	23,348	18,912	25,998	24,361	38,055	28,313	23,835	22,990	20,320	55,350	59,203	45,647	65,328
Total	280,545	268,671	267,382	327,072	406,782	395,640	323,269	331,580	300,100	653,017	598,052	586,404	817,819

Imports of Peanuts into the U.S.



In-Shell Exports 2013-2015 Crops (Metric Tons)

2013 Crop

	August	September	October	November	December	January	February	March	April	May	June	July	
World	6,439	4,998	4,194	4,524	3,235	4,119	8,002	6,607	6,710	4,837	5,579	6,062	65,305
China	0	0	0	130	56	76	243	0	220	66	0	1,697	2,487
Vietnam	0	364	100	0	0	0	0	0	0	0	0	0	464
China + Vietnam ▲	0	364	100	130	56	76	243	0	220	66	0	1,697	2,952
Percent	0.00%	7.28%	2.39%	2.88%	1.72%	1.85%	3.04%	0.00%	3.28%	1.36%	0.00%	27.99%	4.52%

2014 Crop

	August	September	October	November	December	January	February	March	April	May	June	July	
World	7,603	4,688	6,576	7,375	8,680	6,461	7,293	4,581	5,418	6,099	5,777	6,074	76,626
China	2,235	1,098	1,718	1,624	2,310	1,283	303	242	306	80	0	1,128	12,326
Vietnam	0	0	0	1,247	1,675	410	774	569	1,097	726	1,270	373	8,140
China + Vietnam ▲	2,235.30	1,097.70	1,717.50	2,871.10	3,984.50	1,693.10	1,076.50	811.30	1,403.10	805.30	1,269.60	1,501.30	20,466.30
Percent	29.40%	23.41%	26.12%	38.93%	45.90%	26.20%	14.76%	17.71%	25.90%	13.20%	21.98%	24.72%	26.71%

2015 Crop

	August	September	October	November	December	January	February	March	April	May	June	July	YTD
World	9,163	7,118	6,539	5,711	10,806	6,303	12,518	16,849	21,220	27,134	49,190	16,946	189,495
China	3,040	1,337	514	1,364	5,596	3,412	9,897	12,699	13,763	18,024	40,632	12,668	122,944
Vietnam	1,298	941	174	110	0	35	508	852	3,410	5,774	5,032	699	18,832
China + Vietnam ▲	4,338	2,278	687	1,474	5,596	3,447	10,405	13,551	17,172	23,798	45,664	13,367	141,776
Percent	47.34%	32.00%	10.51%	25.80%	51.78%	54.68%	83.12%	80.43%	80.93%	87.71%	92.83%	78.88%	74.82%

2015 Supply / Demand - Lovatt's Estimate

Supply	Runners	Spanish	Virginia	Valencia	Total	YoY Δ
<i>Carry In 8/1/15</i>						
Edible	295	13	75	3	386	
Farmer Stock	<u>457</u>	13	194	4	<u>668</u>	
Subtract 2014 Carry-In Error	(104)				(104)	
Total Carry-In (Likely)	648	26	269	7	950	1%
Production	2,669	40	285	27	3,021	16%
SMK Adjustment/Fires	(7)				(7)	
Imports	53	0	0	0	53	4%
Total Available	3,363	66	554	34	4,017	9%
Demand						
U.S. Edible	1,570	26	268	19	1,883	3.9%
U.S. Seed	126	6	25	4	161	2%
Total U.S. Demand	1,696	32	293	23	2,044	4%
Export Edible/Seed	518	17	76	2	613	24%
Export Roast	0	0	56	2	58	-16%
Export Farmer Stock	137	0	10	0	147	359%
Total Export	655	17	142	4	818	37%
Total Crashings/Feed	64	0	0	0	64	-22%
Total Demand	2,415	49	435	27	2,926	10%
<i>Estimated Carry-out 7/31/16</i>						
Edible	264	16	69	5	354	
Farmer Stock	<u>684</u>	<u>1</u>	<u>50</u>	<u>2</u>	737	
Lovatt's Calculated Carry	948	17	119	7	1,091	4%
Disappearance Not Tabulated	212	0	0	0	212	
<i>Official Carry-out 7/31/16</i>						
Edible	264	16	69	5	354	
Farmer Stock	<u>472</u>	<u>1</u>	<u>50</u>	<u>2</u>	525	
Official USDA Carry-Out	736	17	119	7	879	-17%
Days Carry	111	127	100	95	102	
Stocks/Use Ratio	30%	35%	27%	26%	28%	

Supply / Demand Estimates for U.S. Peanuts (2003 - 2015)

	2003	2004	2005	2006	2007	2008	2009	2010	2011	2012	2013	2014	2015	
Carry-In 7-31	389	464	390	402	403	364	402	429	365	356	435	435	386	
Farmer Stock Carry-In	<u>61</u>	<u>117</u>	<u>339</u>	<u>701</u>	<u>366</u>	<u>174</u>	<u>680</u>	<u>496</u>	<u>372</u>	<u>136</u>	<u>962</u>	<u>508</u>	<u>668</u>	
Total Carry-In	450	581	729	1,103	769	538	1,082	925	737	492	1,397	943	1,054	
Domestic Purchases	2,022	2,135	2,380	1,711	1,815	2,558	1,825	2,074	1,829	3,399	2,098	2,605	3,021	?????
Adjustments	(49)	(27)	(98)	(97)	(9)	0	38	(88)		13	(32)	96	(111)	
Imports	<u>22</u>	<u>25</u>	<u>19</u>	<u>35</u>	<u>41</u>	<u>49</u>	<u>41</u>	<u>37</u>	<u>143</u>	<u>66</u>	<u>50</u>	<u>51</u>	<u>53</u>	
Net Supply	2,445	2,714	3,030	2,752	2,616	3,145	2,986	2,948	2,709	3,970	3,513	3,695	4,017	
Domestic Demand	1,571	1,673	1,624	1,629	1,633	1,630	1,706	1,800	1,842	1,816	1,883	1,970	2,044	
Export Demand	284	277	267	327	407	396	323	332	299	653	598	589	818	
Crush	9	35	36	27	38	37	32	59	76	104	89	82	64	
Untabulated Disappearance													212	
Total Demand	1,864	1,985	1,927	1,983	2,078	2,063	2,061	2,191	2,217	2,573	2,570	2,641	3,138	
Total Edible Carry-Out	464	390	402	403	364	402	429	385	356	435	435	386	354	
Farmer Stock Carry-Out	<u>117</u>	<u>339</u>	<u>688</u>	<u>366</u>	<u>174</u>	<u>680</u>	<u>496</u>	<u>372</u>	<u>136</u>	<u>962</u>	<u>508</u>	<u>668</u>	<u>525</u>	
Total Carry-Out	581	729	1,103	769	538	1,082	925	757	492	1,397	943	1,054	879	
								<i>Shrink</i>	-20					
								<i>Effective Carry</i>	737					
Carry-Out Days	114	134	209	142	94	191	164	123	81	198	134	146	102	
Stocks/Use Ratio	31%	37%	57%	39%	26%	52%	45%	34%	22%	54%	37%	40%	28%	

Harvested Acres Estimated

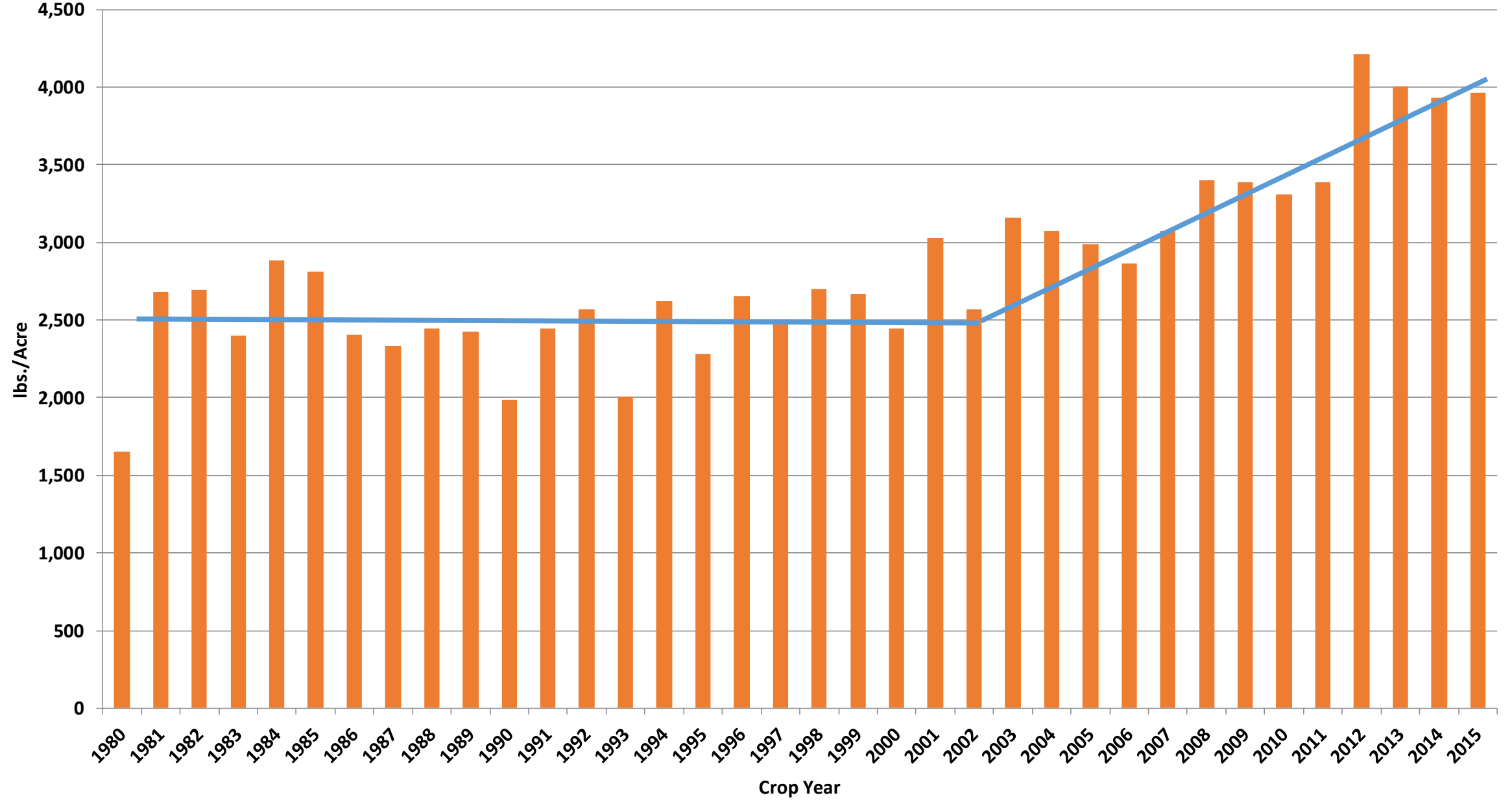
AREA	2016			2016	
	September USDA Estimated ACRES PLANTED	Lovatts Estimated ACRES PLANTED	5 Year average Harvested/Planted Ratio	USDA Anticipated Harvest	Lovatt Anticipated Harvest
ALABAMA	175	173	98.67%	173	171
FLORIDA	155	158	93.67%	146	148
GEORGIA	720	724	98.45%	710	713
MISSISSIPPI	40	39	95.48%	39	37
SOUTHEAST	1090	1,094	97.54%	1,068	1069
ARKANSAS	24	23	N/A	23	23
OKLAHOMA	13	11	90.80%	12	10
TEXAS	305	301	96.44%*	250	199
NEW MEXICO	7	8	100.00%	7	8
SOUTHWEST	349	343	95.98%	292	240
N. CAROLINA	102	100	98.90%	101	99
S. CAROLINA	110	90	91.08%	106	82
VIRGINIA	21	20	98.89%	20	20
VIR/CAR	233	210	95.18%	227	201
TOTAL U.S.	1,672	1,647	97.00%	1,587	1,510

In Texas
USDA Shows
82%
harvested.
I show 66%

Yield per Harvested Acre (2010 - 2015)

Crop Year:	Yield per Harvested Acre						Average Yields				Lovatt's September Estimate
	2010	2011	2012	2013	2014	2015	2012-2013	2013-2014	2014-2015	Average 2012-2015	
Alabama	2,600	2,950	4,000	3,550	3,150	3,350	3,826	3,327	3,256	3,536	3265
Florida	3,500	3,500	3,900	3,950	4,000	3,650	3,920	3,978	3,818	3,868	3910
Georgia	3,530	3,625	4,580	4,430	4,121	4,470	4,525	4,259	4,326	4,417	4390
<u>Mississippi</u>	<u>3,500</u>	<u>4,000</u>	<u>4,400</u>	<u>3,700</u>	<u>4,000</u>	<u>3,600</u>	<u>4,118</u>	<u>3,845</u>	<u>3,770</u>	<u>3,954</u>	<u>3620</u>
Southeast	3,332	3,465	4,355	4,144	3,921	4,132	4,275	4,022	4,042	4,152	4117
Arkansas											3900
Oklahoma	3,200	2,600	3,650	3,700	4,000	3,500	3,671	3,822	3,775	3,707	3760
Texas	3,600	2,680	3,600	3,620	3,620	3,500	3,609	3,620	3,552	3,579	3730
<u>New Mexico</u>	<u>3,200</u>	<u>3,000</u>	<u>2,600</u>	<u>3,100</u>	<u>3,500</u>	<u>3,000</u>	<u>2,806</u>	<u>3,257</u>	<u>3,237</u>	<u>2,960</u>	<u>3200</u>
Southwest	3,536	2,684	3,550	3,603	3,646	3,486	3,573	3,625	3,556	3,565	3730
N.Carolina	2,800	3,600	4,100	3,900	4,320	3,400	4,013	4,124	3,873	3,944	3945
S. Carolina	3,400	3,300	3,900	3,500	3,800	3,200	3,731	3,674	3,539	3,634	3730
<u>Virginia</u>	<u>1,800</u>	<u>4,100</u>	<u>4,200</u>	<u>3,950</u>	<u>4,450</u>	<u>3,850</u>	<u>4,089</u>	<u>4,221</u>	<u>4,150</u>	<u>4,120</u>	<u>3785</u>
Vir/Car	2,921	3,515	4,017	3,726	4,076	3,358	3,892	3,921	3,743	3,817	3828
Total U.S.	3,309	3,386	4,217	4,001	3,932	3,963	4,132	3,958	3,945	4,034	4017

Yield per Acre U.S. Peanuts



USDA 2016 Crop Estimate SEPTEMBER

Area	Harvested Acres (M)	Yield per Harvested Acre (lbs.)	Total Production (Tons)
ALABAMA	173	3900	337,350
FLORIDA	146	3900	284,700
GEORGIA	710	4600	1,633,000
MISSISSIPPI	39	4100	79,950
SOUTHEAST	1068	4373	2,335,000
Arkansas	23	3900	44,850
OKLAHOMA	12	3800	22,800
TEXAS	250	3000	375,000
New Mexico	7	3000	10,500
SOUTHWEST	292	3104	453,150
N. CAROLINA	101	3900	196,950
S. CAROLINA	106	3600	190,800
VIRGINIA	20	3300	33,000
VIR/CAR	227	3707	420,750
TOTAL U.S.	1587	4044	3,208,900

?

More Dryland Harvested

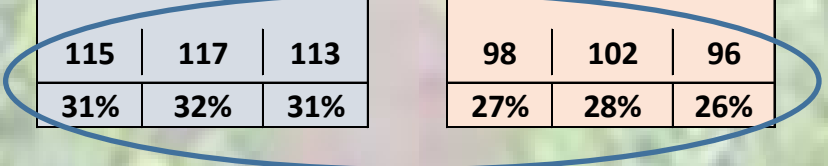
Something to Think About...Possible Crop Estimates

	Possible 2016 Yields			HARVESTED ACRES		USDA Projected Acres			Lovatt Projected Acres		
	4 Year Average	USDA September	LOVATT'S YIELDS	USDA	Lovatt	4 Year Average	USDA September Estimate	Lovatt's Yield Estimate	4 Year Average	USDA September Estimate	Lovatt's Yield Estimate
				September	September						
				Harvested (M)	Harvested (M)						
Alabama	3,536	3,900	3,265	173	171	305,879	337,350	282,423	302,343	333,450	279,158
Florida	3,868	3,900	3,910	146	148	282,341	284,700	285,430	286,208	288,600	289,340
Georgia	4,417	4,600	4,390	710	713	1,567,980	1,633,000	1,558,450	1,574,606	1,639,900	1,565,035
Mississippi	<u>3,954</u>	<u>4,100</u>	<u>3,620</u>	39	37	<u>77,107</u>	<u>79,950</u>	<u>70,590</u>	<u>73,153</u>	<u>75,850</u>	<u>66,970</u>
Southeast	4,152	4,373	4,117	1,068	1069	2,233,307	2,335,000	2,196,893	2,236,310	2,337,800	2,200,503
Arkansas	3900 (est)	3,900	3,900	23	23	44,850	44,850	44,850	37,050	44,850	44,850
Oklahoma	3,707	3,800	3,760	12	10	22,241	22,800	22,560	18,534	19,000	18,800
Texas	3,579	3,000	3,730	250	199	447,330	375,000	466,250	356,074	298,500	371,135
New Mexico	<u>2,960</u>	<u>3,000</u>	<u>3,200</u>	7	8	<u>10,361</u>	<u>10,500</u>	<u>11,200</u>	<u>11,842</u>	<u>12,000</u>	<u>12,800</u>
Southwest	3,565	3,104	3,730	292	240	524,782	453,150	544,860	423,500	374,350	447,585
N. Carolina	3,944	3,900	3,945	101	99	199,181	196,950	199,223	195,237	193,050	195,278
S. Carolina	3,634	3,600	3,730	106	82	192,590	190,800	197,690	148,985	147,600	152,930
Virginia	<u>4,120</u>	<u>3,300</u>	<u>3,785</u>	20	20	<u>41,203</u>	<u>33,000</u>	<u>37,850</u>	<u>41,203</u>	<u>33,000</u>	<u>37,850</u>
Vir/Car	3,817	3,707	3,841	227	201	432,974	420,750	434,763	385,425	373,650	386,058
Total U.S.	4,034	4,044	4,019	1,587	1,510	3,191,064	3,208,900	3,176,515	3,045,235	3,085,800	3,034,145

Supply / Demand Estimates for U.S. Peanuts (2011 - 2016)

	2011	2012	2013	2014	2015	2016			2016			2016		
						USDA Acres			Lovatt Acres					
						4 Year	September	LOVATT	4 Year	September	LOVATT	4 Year	September	LOVATT
						Average	YIELDS	YIELDS	Average	YIELDS	YIELDS	Average	YIELDS	YIELDS
Carry-In 7-31	365	356	435	435	386	393	393	393	393	393	393	393	393	393
Farmer Stock Carry-In	372	136	962	508	668	<u>486</u>	<u>486</u>	<u>486</u>	<u>486</u>	<u>486</u>	<u>486</u>	<u>486</u>	<u>486</u>	<u>486</u>
Subtract 2014 Carry-In Error					-104									
Total Carry-In	737	492	1,397	943	950	879	879	879	879	879	879	879	879	879
Domestic Purchases	1,829	3,399	2,098	2,605	3,021	3,191	3,209	3,177	3,045	3,086	3,034			
Adjustments	0	13	-32	96	-7	0	0	0	0	0	0			
Imports	<u>143</u>	<u>66</u>	<u>50</u>	<u>51</u>	<u>53</u>	<u>53</u>	<u>53</u>	<u>53</u>	<u>53</u>	<u>53</u>	<u>53</u>			
Net Supply	2,709	3,970	3,513	3,695	4,017	4,123	4,141	4,109	3,977	4,018	3,966			
Domestic Demand	1,842	1,816	1,883	1,970	2,044	2,044	2,044	2,044	2,044	2,044	2,044			
Export Demand	299	653	598	589	818	818	818	818	818	818	818			
Crush	76	104	89	82	64	64	64	64	64	64	64			
Disappearance Not Tabulated		??????????			212	212	212	212	?	212	212	212		
Total Demand	2,217	2,573	2,570	2,641	3,138	3,138	3,138	3,138	3,138	3,138	3,138			
Total Edible Carry-Out	356	435	435	386	393	393	393	393	393	393	393			
Farmer Stock Carry-Out	<u>136</u>	<u>962</u>	<u>508</u>	<u>668</u>	<u>486</u>	<u>592</u>	<u>610</u>	<u>578</u>	<u>446</u>	<u>487</u>	<u>435</u>			
Total Carry-Out	492	1,397	943	1,054	879	985	1,003	971	839	880	828			
Carry-Out Days	81	198	134	146	102	115	117	113	98	102	96			
Stocks/Use Ratio	22%	54%	37%	40%	28%	31%	32%	31%	27%	28%	26%			

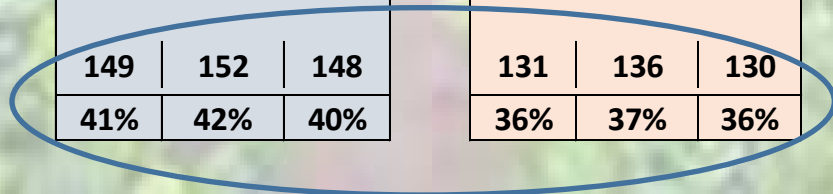
Using Average Yields →



Supply / Demand Estimates for U.S. Peanuts (2011 - 2016)

	2011	2012	2013	2014	2015	2016	2016	2016	2016	2016	2016
						USDA Acres			Lovatt Acres		
						4 Year Average	September YIELDS	LOVATT YIELDS	4 Year Average	September YIELDS	LOVATT YIELDS
Carry-In 7-31	365	356	435	435	386	393	393	393	393	393	393
Farmer Stock Carry-In	372	136	962	508	668	486	486	486	486	486	486
Subtract 2014 Carry-In Error					-104						
Total Carry-In	737	492	1,397	943	950	879	879	879	879	879	879
Domestic Purchases	1,829	3,399	2,098	2,605	3,021	3,191	3,209	3,177	3,045	3,086	3,034
Adjustments	0	13	-32	96	-7	0	0	0	0	0	0
Imports	143	66	50	51	53	53	53	53	53	53	53
Net Supply	2,709	3,970	3,513	3,695	4,017	4,123	4,141	4,109	3,977	4,018	3,966
Domestic Demand	1,842	1,816	1,883	1,970	2,044	2,044	2,044	2,044	2,044	2,044	2,044
Export Demand	299	653	598	589	818	818	818	818	818	818	818
Crush	76	104	89	82	64	64	64	64	64	64	64
Disappearance Not Tabulated	????????				212						
Total Demand	2,217	2,573	2,570	2,641	3,138	2,926	2,926	2,926	2,926	2,926	2,926
Total Edible Carry-Out	356	435	435	386	393	393	393	393	393	393	393
Farmer Stock Carry-Out	136	962	508	668	486	804	822	790	658	699	647
Total Carry-Out	492	1,397	943	1,054	879	1,197	1,215	1,183	1,051	1,092	1,040
Carry-Out Days	81	198	134	146	102	149	152	148	131	136	130
Stocks/Use Ratio	22%	54%	37%	40%	28%	41%	42%	40%	36%	37%	36%

Using Average Yields →



SUMMARY OF SOUTH GEORGIA CROP ENTERPRISE ESTIMATES, 2016

By A.R. Smith, W.D. Shurley, UGA Extension Economists, Department of Agricultural & Applied Economics; and N.B. Smith, Clemson University Agribusiness Extension Crop Economist

April 2016												
Conventional Tillage	IRRIGATED					NON-IRRIGATED						
	Cotton	Peanuts	Corn	Soybeans	Grain Sorghum	Cotton	Peanuts	Corn	Soybeans	Grain Sorghum	Int Mgmt Wheat	Wheat
EXPECTED YIELD per ACRE	1,200 lbs	4,700 lbs	200 bu	60 bu	100 bu	750 lbs	3,400 lbs	85 bu	30 bu	65 bu	75 bu	55 bu
EXPECTED SEASON AVG PRICE	\$0.70 /lb	\$370 /ton	\$4.25 /bu	\$8.60 /bu	\$4.04 /bu	\$0.70 /lb	\$370 /ton	\$4.25 /bu	\$8.60 /bu	\$4.04 /bu	\$5.00 /bu	\$5.00 /bu
GROSS RETURN per ACRE	\$840	\$869	\$850	\$516	\$404	\$525	\$630	\$361	\$258	\$263	\$375	\$275
VARIABLE COSTS per ACRE												
Seed	101	103	94	50	21	101	103	51	50	13	51	31
BWEP	2					1						
Fertilizer & Lime*	115	64	245	65	137	86	64	95	65	86	108	79
Chicken Litter												
Chemicals	86	158	49	61	28	82	142	52	25	28	36	24
Custom Application												
Hand Weeding	15	15				15	15					
Scouting	10	10				10	10					
Fuel and Lube**	23	31	14	11	14	23	31	14	11	14	18	10
Repairs and Maintenance	31	46	19	15	19	31	46	19	15	19	19	12
Irrigation***	64	48	64	40	32							
Labor	26	31	13	10	13	23	31	13	10	13	15	8
Insurance	18	19	13	9	20	26	27	25	15	18	14	15
Land Rent												
Other												
Interest on Operating Capital	16	17	17	8	9	13	15	9	6	6	8	6
Gin & Warehouse (net after cottonseed)	-10					-7						
Drying and Cleaning		63	61		31		45	26		20	7	5
Marketing and Fees		15					11					
TOTAL VARIABLE COSTS per ACRE	\$497	\$620	\$589	\$269	\$322	\$405	\$540	\$303	\$197	\$215	\$277	\$188
RETURN ABOVE VARIABLE COST per ACRE	\$343	\$249	\$261	\$247	\$82	\$120	\$89	\$58	\$61	\$47	\$98	\$87
BREAKEVEN PRICE (Variable Cost)	\$0.41 /lb	\$264 /ton	\$2.94 /bu	\$4.49 /bu	\$3.22 /bu	\$0.54 /lb	\$318 /ton	\$3.57 /bu	\$6.55 /bu	\$3.31 /bu	\$3.69 /bu	\$3.43 /bu
BREAKEVEN YIELD per ACRE (Variable Cost)	710 lbs	3,352 lbs	139 bu	31 bu	80 bu	579 lbs	2,917 lbs	71 bu	23 bu	53 bu	55 bu	38 bu
FIXED COSTS per ACRE												
Machinery and Equipment	150	136	67	57	65	150	136	67	57	65	66	42
Irrigation	125	125	125	125	125							
Buildings												
Miscellaneous Overhead	25	31	29	13	16	20	27	15	10	11	14	9
TOTAL SPECIFIED FIXED COSTS per ACRE	\$300	\$292	\$222	\$195	\$206	\$170	\$163	\$82	\$66	\$75	\$80	\$51
TOTAL COST EXCL. LAND & MGT per ACRE	\$796	\$912	\$811	\$464	\$528	\$575	\$704	\$386	\$263	\$291	\$356	\$240
RETURN TO LAND AND MGT per ACRE	\$44	-\$43	\$39	\$52	-\$124	-\$50	-\$74	-\$24	-\$5	-\$28	\$19	\$35
BREAKEVEN PRICE (Total Costs)	\$0.66 /lb	\$388 /ton	\$4.05 /bu	\$7.74 /bu	\$5.28 /bu	\$0.77 /lb	\$414 /ton	\$4.54 /bu	\$8.77 /bu	\$4.47 /bu	\$4.75 /bu	\$4.36 /bu
BREAKEVEN YIELD per ACRE	1,138 lbs	4,934 lbs	191 bu	54 bu	131 bu	821 lbs	3,799 lbs	91 bu	31 bu	72 bu	71 bu	48 bu

Calculating PLC Payments 2016 Crop and beyond

Generic Acres /Planted Acres	100.0	100.0	100.0	100.0	100.0	100.0	100.0	100.0
Projected Yield	4,044.0	4,044.0	4,044.0	4,044.0	4,044.0	4,044.0	4,044.0	4,044.0
Total Production (tons)	202.2	202.2	202.2	202.2	202.2	202.2	202.2	202.2
Reference Price	\$ 535.00	\$ 535.00	\$ 535.00	\$ 535.00	\$ 535.00	\$ 535.00	\$ 535.00	\$ 535.00
Market Price	\$386.00	\$390.00	\$400.00	\$410.00	\$420.00	\$430.00	\$440.00	\$450.00
Difference	\$ 149.00	\$ 145.00	\$ 135.00	\$ 125.00	\$ 115.00	\$ 105.00	\$ 95.00	\$ 85.00
85% = PLC	\$ 126.65	\$ 123.25	\$ 114.75	\$ 106.25	\$ 97.75	\$ 89.25	\$ 80.75	\$ 72.25
Less Sequestration = .068%	\$ 118.04	\$ 114.87	\$ 106.95	\$ 99.03	\$ 91.10	\$ 83.18	\$ 75.26	\$ 67.34
08-'12 Average Yield	3,578	3,578	3,578	3,578	3,578	3,578	3,578	3,578
Payment Yield (90%)	3,221	3,221	3,221	3,221	3,221	3,221	3,221	3,221
PLC Payment/ton	\$ 94.00	\$ 91.48	\$ 85.17	\$ 78.86	\$ 72.55	\$ 66.24	\$ 59.93	\$ 53.62
Loan rate	\$ 355.00	\$ 355.00	\$ 355.00	\$ 355.00	\$ 355.00	\$ 355.00	\$ 355.00	\$ 355.00
Net to the Grower	\$449.00	\$446.48	\$440.17	\$433.86	\$427.55	\$421.24	\$414.93	\$408.62

Peanut Cotton Contract Equivalents 2016

Based upon Return above Variable Costs

Irrigated Peanuts and Cotton

Peanut Yields @4,700 lbs./Acre

Cotton Price \$/lbs.	\$0.66	\$0.68	\$0.70	\$0.72	\$0.74	\$0.76	\$0.78	\$0.80	\$0.82	\$0.84	\$0.86
Yield (lbs/ acre)	1200	1200	1200	1200	1200	1200	1200	1200	1200	1200	1200
Revenue/acre	\$792	\$816	\$840	\$864	\$888	\$912	\$936	\$960	\$984	\$1,008	\$1,032
Cotton Variable Costs	\$497	\$497	\$497	\$497	\$497	\$497	\$497	\$497	\$497	\$497	\$497
Return Above Variable Costs	\$295	\$319	\$343	\$367	\$391	\$415	\$439	\$463	\$487	\$511	\$535
Peanut Variable Costs	\$620	\$620	\$620	\$620	\$620	\$620	\$620	\$620	\$620	\$620	\$620
Revenue/acre	\$915	\$939	\$963	\$987	\$1,011	\$1,035	\$1,059	\$1,083	\$1,107	\$1,131	\$1,155
Yield(Lbs/acre)	4,700	4,700	4,700	4,700	4,700	4,700	4,700	4,700	4,700	4,700	4,700
Peanut Price \$/ton	\$389	\$400	\$410	\$420	\$430	\$440	\$451	\$461	\$471	\$481	\$491

Peanut Corn Contract Equivalents 2016

Based upon Return above Variable Costs

Irrigated Peanuts and Corn

Peanut Yields @4700lbs.

Corn Price	\$3.35	\$3.45	\$3.55	\$3.65	\$3.75	\$3.85	\$3.95	\$4.05	\$4.15	\$4.25
Yield (lbs/ acre)	200	200	200	200	200	200	200	200	200	200
Revenue/acre	\$670	\$690	\$710	\$730	\$750	\$770	\$790	\$810	\$830	\$850
Corn Variable Costs	\$589	\$589	\$589	\$589	\$589	\$589	\$589	\$589	\$589	\$589
Return Above Variable Costs	\$81	\$101	\$121	\$141	\$161	\$181	\$201	\$221	\$241	\$261
Peanut Variable Costs	\$620	\$620	\$620	\$620	\$620	\$620	\$620	\$620	\$620	\$620
Revenue/acre	701	721	741	761	781	801	821	841	861	881
Yield(Lbs/acre)	4,700	4,701	4,702	4,703	4,704	4,705	4,706	4,707	4,708	4,709
Peanut Price \$/ton	\$298	\$307	\$315	\$324	\$332	\$341	\$349	\$358	\$366	\$375

Peanut Soybean Contract Equivalents 2016

Based upon Return above Variable Costs

Irrigated Peanuts and Beans

Peanut Yields @4,700lbs.

Soybean Price	\$8.85	\$8.95	\$9.05	\$9.15	\$9.25	\$9.35	\$9.45	\$9.55	\$9.65	\$9.75
Yield (lbs/ acre)	60	60	60	60	60	60	60	60	60	60
Revenue/acre	\$531	\$537	\$543	\$549	\$555	\$561	\$567	\$573	\$579	\$585
Soybean Variable Costs	\$269	\$269	\$269	\$269	\$269	\$269	\$269	\$269	\$269	\$269
Return Above Variable Costs	\$262	\$268	\$274	\$280	\$286	\$292	\$298	\$304	\$310	\$316
Peanut Variable Costs	\$620	\$620	\$620	\$620	\$620	\$620	\$620	\$620	\$620	\$620
Revenue/acre	882	888	894	900	906	912	918	924	930	936
Yield(Lbs/acre)	4,700	4,701	4,702	4,703	4,704	4,705	4,706	4,707	4,708	4,709
Peanut Price \$/ton	\$375	\$378	\$380	\$383	\$386	\$388	\$391	\$393	\$396	\$398

December 2017 Cotton Daily Contract March 2016 - September 2016

CTZ17 - Cotton #2 - Daily OHLC Chart



September 2017 Corn Daily Contract March 2016 - September 2016

ZCU17 - Corn - Daily OHLC Chart



November 2017 Soybeans Daily Contract March 2016 - September 2016

ZSX17 - Soybeans - Daily OHLC Chart



U.S. Dollar Index August 2011 - August 2016

DX - U.S. Dollar Index - Weekly Nearest OHLC Chart



U.S. Dollar Index vs. December Cotton August 2011 - August 2016

DX - U.S. Dollar Index - Weekly Nearest OHLC Chart

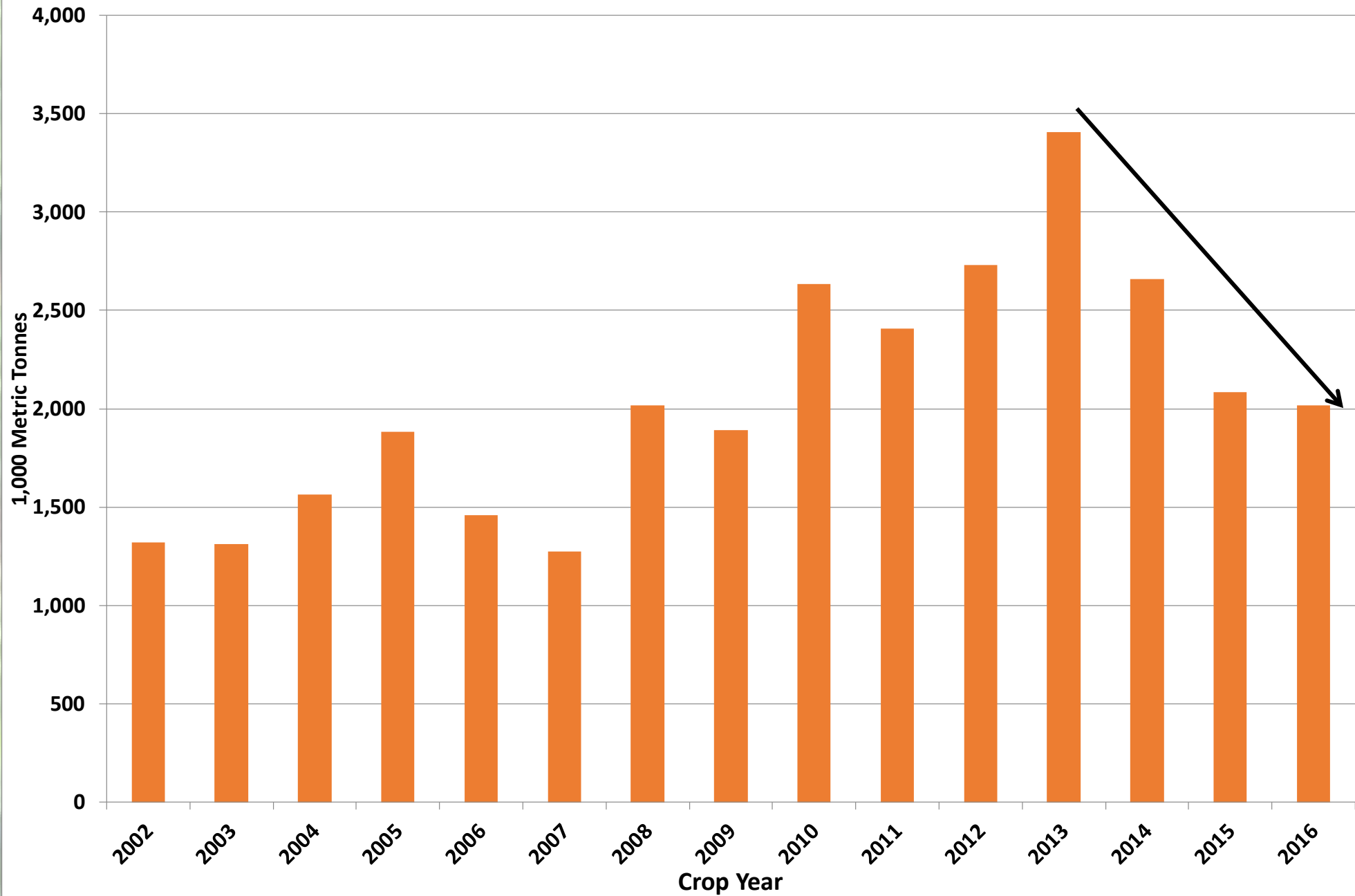


2013-2016 World Supply / Demand Peanuts per USDA-FAS September 2016

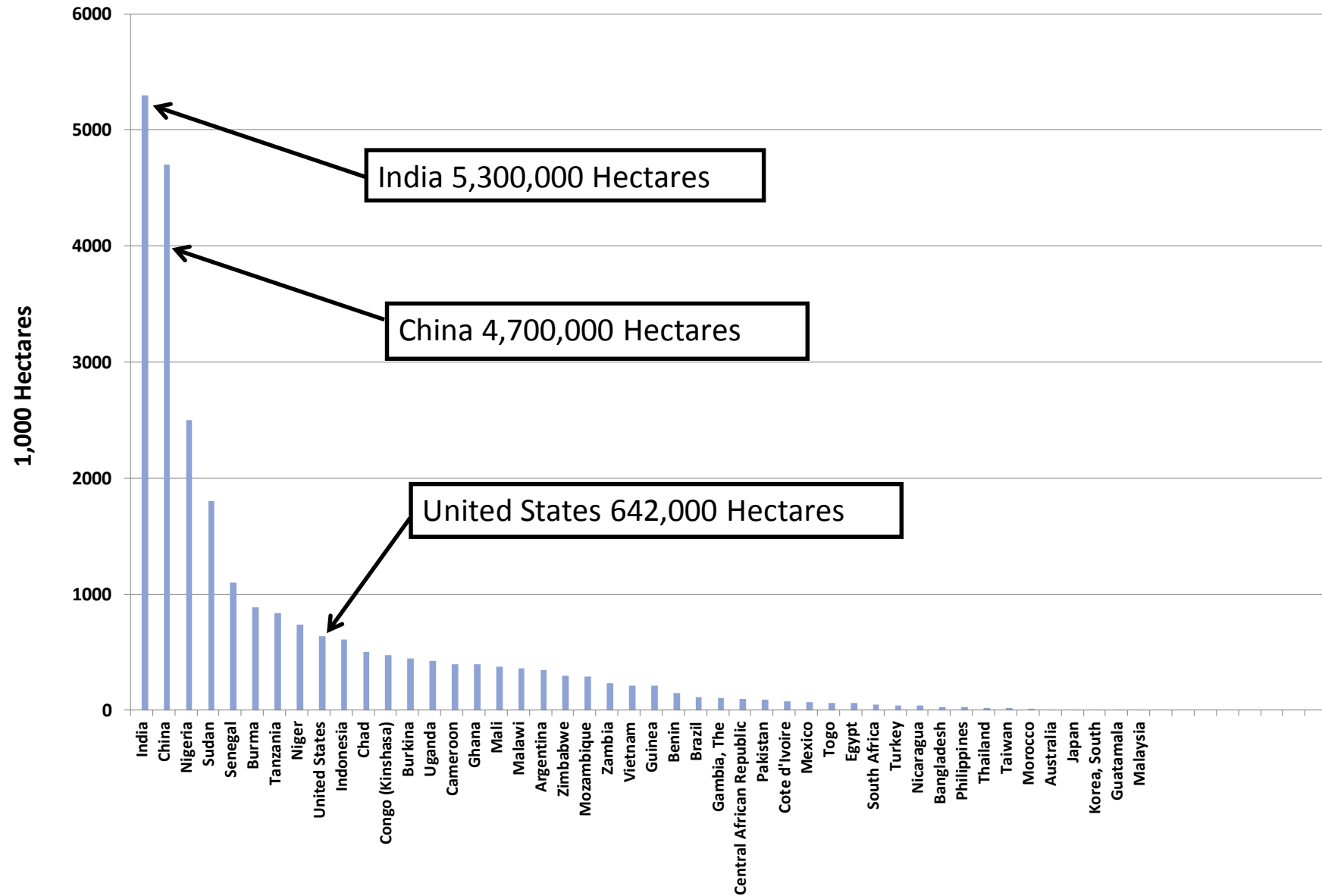
Figures in 000 Metric Tonnes.

<u>Supply</u>	2013	YoY Δ Vs. 2012	2014	YoY Δ Vs. 2013	2015	YoY Δ Vs. 2014	2016	YoY Δ Vs. 2015
<i>World Carry In:</i> Metric Tonnes	2,730		3,408		2,659		2,084	
Total Carry-In	2,730	13%	3,408	25%	2,659	-22%	2,084	-22%
Production	41,399	4%	39,841	-4%	40,479	2%	41,729	3%
MY Imports	2,369	1%	2,526	7%	3,199	27%	3,203	0%
Total Supply	46,498	4%	45,775	-2%	46,337	1%	47,016	1%
<u>Demand</u>								
Crush	17,497	4%	17,082	-2%	16,788	-2%	17,548	5%
Domestic Food Use	19,029	1%	19,513	3%	19,866	2%	20,078	1%
Domestic Feed/ Waste	3,661	11%	3,223	-12%	3,922	22%	3,529	-10%
Total Domestic Demand	40,187	3%	39,818	-1%	40,576	2%	41,155	1%
Export Demand								
MY Exports	2,903	9%	3,298	14%	3,677	11%	3,842	4%
Total Demand	43,090	3%	43,116	0%	44,253	3%	44,997	2%
<i>World Carry-out :</i> Metric Tonnes	3,408	20%	2,659	-22%	2,084	-22%	2,019	-3%

World Carry-Out Peanuts (M Metric Tonnes) September 2016



Peanut Hectares Harvested 2016 Crop September 2016



Cotton in China September 2016

2013-2016 China Supply / Demand per USDA-FAS

Figures in 000's of 480 lb. Bales

	2013	YoY Δ vs.2012	2014	YoY Δ vs.2013	2015	YoY Δ vs. 2014	2016	YoY Δ vs.2015
Supply								
Total Carry-In	50,361	62%	62,707	25%	67,920	8%	60,198	-11%
Production	32,750	-6%	30,000	-8%	22,000	-27%	21,000	-5%
MY Imports	14,122	-31%	8,284	-41%	4,406	-47%	4,500	2%
Total Supply	97,233	13%	100,991	4%	94,326	-7%	85,698	-9%
Demand								
Use	34,500	-4%	33,000	-4%	34,000	3%	35,000	3%
Total Domestic Demand	34,500	-4%	33,000	-4%	34,000	3%	35,000	3%
Export Demand								
MY Exports	26	-45%	71	173%	128	80%	100	-22%
Total Demand	34,526	-4%	33,071	-4%	34,128	3%	35,100	3%
China Carry-out :								
000 Bales	62,707	25%	67,920	8%	60,198	-11%	50,598	-16%
Stocks to Use Ratio	181.6%		205.4%		176.4%		144.2%	

Corn in China September 2016

2013-2016 China Supply / Demand per USDA-FAS

Figures in Million Metric Tonnes.

	2013	YoY Δ Vs. 2012	2014	YoY Δ Vs. 2013	2015	YoY Δ Vs. 2014	2016	YoY Δ Vs. 2015
<u>Supply: MM Metric Tonnes</u>								
Total Carry-In	67,570	14%	81,315	20%	100,464	24%	110,674	10%
Production	218,490	6%	215,646	-1%	224,580	4%	218,000	-3%
MY Imports	3,277	21%	5,516	68%	3,150	-43%	1,000	-68%
Total Supply	289,337	8%	302,477	5%	328,194	9%	329,674	0%
<u>Demand</u>								
Domestic Food Use	58,000	4%	62,000	7%	64,000	3%	67,000	5%
Domestic Feed/Residual	150,000	4%	140,000	-7%	153,500	10%	159,000	4%
Total Demand - China	208,000	4%	202,000	-3%	217,500	8%	226,000	4%
<u>Export Demand</u>								
MY Exports	22	-73%	13	-41%	20	54%	20	0%
Total Demand	208,022	4%	202,013	-3%	217,520	8%	226,020	4%
<i>China Carry-out :</i>								
Million Metric Tonnes	81,315	20%	100,464	24%	110,674	10%	103,654	-6%
Stocks to Use Ratio	49.7%		50.4%	1%	54.5%	8%	45.9%	-16%

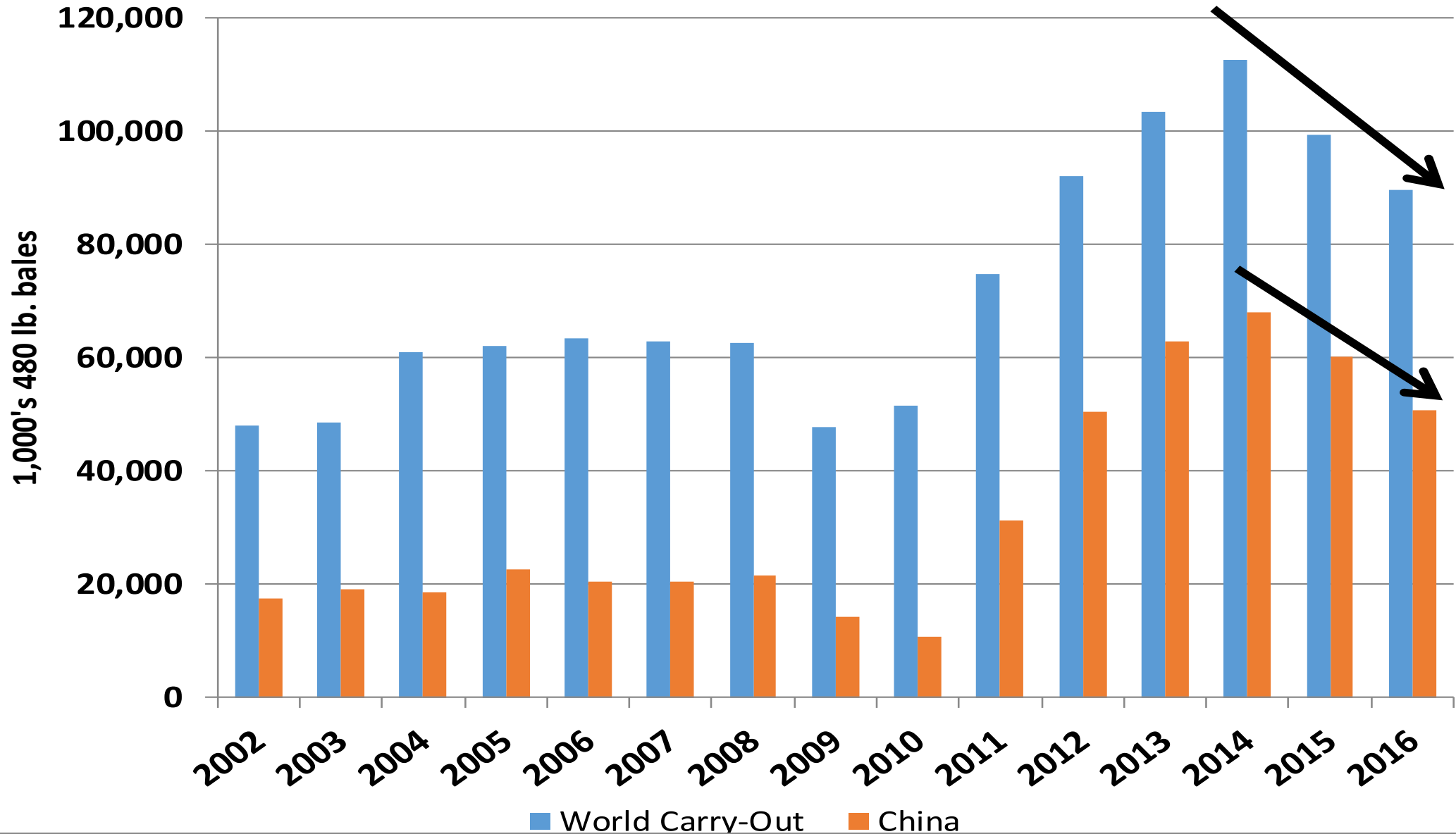
World Corn September 2016

2013-2016 World Supply / Demand per USDA-FAS

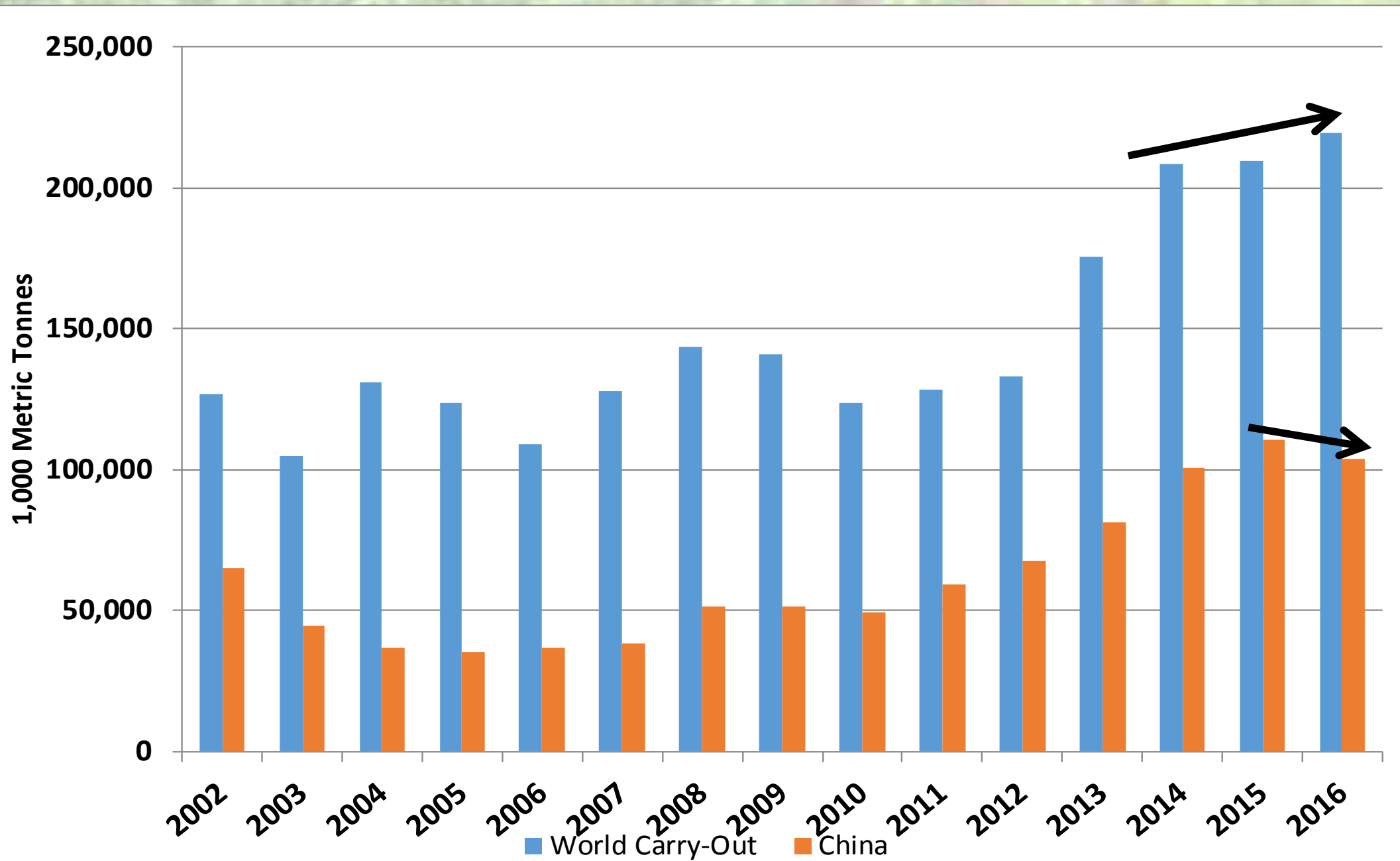
Figures in Million Metric Tonnes.

	2013	YoY Δ	2014	YoY Δ	2015	YoY Δ	2016	YoY Δ
<u>Supply: MM Metric Tonnes</u>								
Total Carry-In	133.3	4%	175.3	32%	208.3	19%	209.2	0%
Production	990.8	14%	1,013.6	2%	959.0	-5%	1,026.6	7%
MY Imports	125.1	26%	125.0	0%	137.3	127%	130.2	-5%
Total Supply	1,249.2	14%	1,313.9	5%	1,304.6	-1%	1,366.1	5%
<u>Demand</u>								
Domestic Food Use	370.8	6%	378.3	2%	377.6	0%	384.1	2%
Domestic Feed/Residual	571.9	10%	585.6	2%	598.6	2%	622.7	4%
Total Domestic Demand	942.7	8%	963.8	2%	976.2	1%	1,006.8	3%
<u>Export Demand</u>								
MY Exports	131.2	38%	141.7	120%	119.2	-16%	139.8	17%
Total Demand	1,073.9	11%	1,105.6	3%	1,095.4	-1%	1,146.6	5%
<u>World Carry-out :</u>								
Million Metric Tonnes	175.3	32%	208.3	19%	209.2	0%	219.5	5%
Stocks to Use Ratio	16.3%		18.8%		18.9%		19.1%	

World Cotton Carry-out



World Corn Carry-out





Thanks For Having Me!